

WAAS CH <b>90132</b> <b>W06A</b>	APP CRS <b>060°</b>	Rwy ldg <b>5188</b> TDZE <b>586</b> Apt Elev <b>592</b>
--	------------------------	---

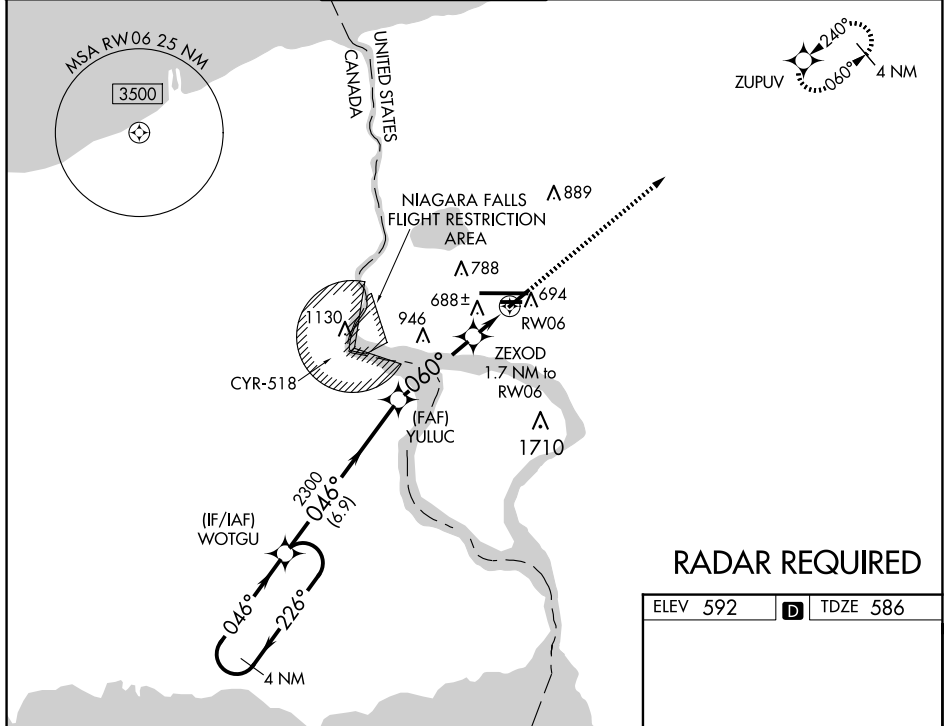
RNAV (GPS) RWY 6  
NIAGARA FALLS INTL (IAG)

RNP APCH.

**V** Baro-VNAV NA when using Buffalo Niagara Intl altimeter setting. For uncompensated Baro-VNAV systems, LNAV/VNAV NA below -18°C (0°F) or above 54°C (130°F). When local altimeter setting not received, use Buffalo Niagara Intl altimeter setting and increase all DA 51 feet and all MDA 60 feet, increase LNAV Cat C and D visibility  $\frac{1}{8}$  SM and Circling Cat C and D  $\frac{1}{4}$  SM. Rwy 6, 10R, 24, 28L helicopter visibility reduction below 1 SM NA. Straight-in Rwy 6 NA at night, Circling Rwy 6, 10R, 24, 28L NA at night.

**MISSED APPROACH:**  
Climb to 3600 direct  
ZUPUV and hold.

ATIS	BUFFALO APP CON	NIAGARA TOWER★	GND CON	CLNC DEL	UNICOM
120.8 269.4	126.5 317.6	118.5 (CTAF) 0 349.0	125.3 275.8	119.25 251.1	122.95



## RADAR REQUIRED

ELEV 592		TDZE 586
----------	---	----------

4 NM Holding Pattern

VGSI and RNAV glidepath not coincident (VGSI Angle 3.00/TCH 45).

3600 ZUPU

WOTGU

YULUC 2300

ZEXOD 1.7 NM to RW06

RW06

3300 ← 226°

046° →

046°

GP 3.00° TCH 55

2300

\*1180

\*LNAV only

6.9 NM

3.5 NM

1.7 NM

CATEGORY	A	B	C	D
LPV DA		864-1	278 (300-1)	
LNAV/ VNAV		849-1	263 (300-1)	
LNAV MDA		940-1	354 (400-1)	
<b>C</b> CIRCLING	1100-1 508 (600-1)		1280-2 688 (700-2)	1280-2¼ 688 (700-2¼)

Diagram illustrating the intersection of Highway 101 and Highway 288, showing various runway and taxiway markings, including TDZ/CL Rwy 28R, REIL Rws 6, 10R, 24, and 28L, HIRL Rwy 10L-28R, and MIRL Rws 6-24 and 10R-28L. The diagram also shows a 060° bearing and a TWR 651.

NIAGARA FALLS, NEW YORK  
Orig-B 18JUN20

43°06'N-78°57'W

NIAGARA FALLS INTL (IAG)  
RNAV (GPS) RWY 6

NE-2, 10 JUL 2025 to 07 AUG 2025

NE-2, 10 JUL 2025 to 07 AUG 2025