

| | | |
|--|------------------------|---|
| WAAS CH 99432 W28B | APP CRS 280° | Rwy ldg 9129 TDZE 588 Apt Elev 592 |
|--|------------------------|---|

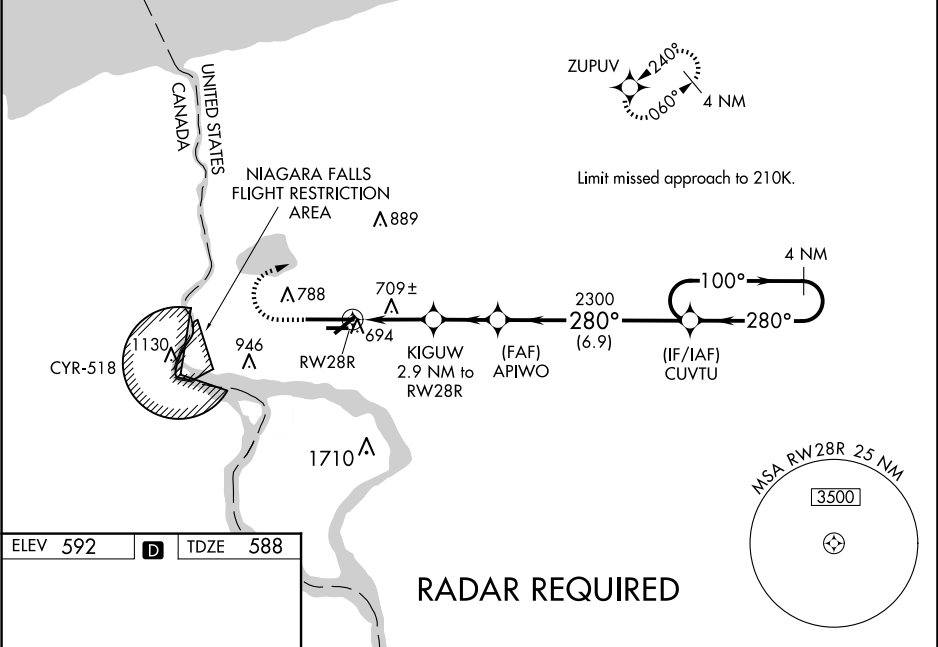
RNAV (GPS) RWY 28R
NIAGARA FALLS INTL (IAG)

⚠ For uncompensated Baro-VNAV systems, LNAV/VNAV NA below -18°C (0°F) or above 54°C (130°F). DME/DME RNP-0.3 NA. When local altimeter setting not received, use Buffalo Niagara Intl altimeter setting and increase all DA 51 feet and all MDA 60 feet; increase LNAV/VNAV all Cats visibility $\frac{1}{8}$ SM and Circling Cat C and D $\frac{1}{4}$ SM. Baro-VNAV and VDP NA with Buffalo Niagara Intl altimeter setting. For inop MALSR increase LNAV/VNAV visibility all Cats to RVR 6000 and LNAV all Cats visibility to RVR 5500. For inop MALSR when using Buffalo Niagara Intl altimeter setting, increase LPV all Cats and LNAV Cats C/D visibility to RVR 5500 and LNAV/VNAV all Cats visibility to RVR 6000. Rwy 28R helicopter visibility reduction below $\frac{3}{4}$ SM NA. Rwy 6, 10R, 24, 28L, helicopter visibility reduction below 1 SM NA. Circling Rwy 6, 10R, 24, 28L, NA at night.

MALSR

MISSED APPROACH:
Climb to 1040 then climbing right turn to 3600 direct ZUPUV and hold, continue climb-in-hold to 3600.

| | | | | | |
|----------------------------|---------------------------------------|---|-------------------------------|---------------------------------|-------------------------|
| ATIS 120.8 269.4 | BUFFALO APP CON 126.5 317.6 | NIAGARA TOWER★ 118.5 (CTAF) 0 349.0 | GND CON 125.3 275.8 | CLNC DEL 119.25 251.1 | UNICOM 122.95 |
|----------------------------|---------------------------------------|---|-------------------------------|---------------------------------|-------------------------|



ELEV 592 D TDZE 588

TDZ/CL Rwy 28R 1
REIL Rws 6,10R, 24, and 28L 1
HIRL Rwy 10L-28R 1
MIRL Rws 6-24 and 10R-28L 1

1040 3600 ZUPUV VGSI and RNAV glidepath not coincident (VGSI Angle 2.50/TCH 67).

GP 3.00° TCH 55

| CATEGORY | A | B | C | D |
|--------------|--------|-------------|---------------------------|--|
| LPV DA | | 838/40 | 250 (300- $\frac{3}{4}$) | |
| LNAV/VNAV DA | | 957/40 | 369 (400- $\frac{3}{4}$) | |
| LNAV MDA | | 960/40 | 372 (400- $\frac{3}{4}$) | |
| CIRCLING | 1100-1 | 508 (600-1) | 1280-2 688 (700-2) | 1280-2 $\frac{1}{4}$ 688 (700-2 $\frac{1}{4}$) |