

WAAS CH 66034 W10A	APP CRS 120°	Rwy ldg TDZE 589 Apt Elev 592
----------------------------------------	------------------------	---------------------------------------------------

RNAV (GPS) RWY 10L

NIAGARA FALLS INTL (IAG)

▼

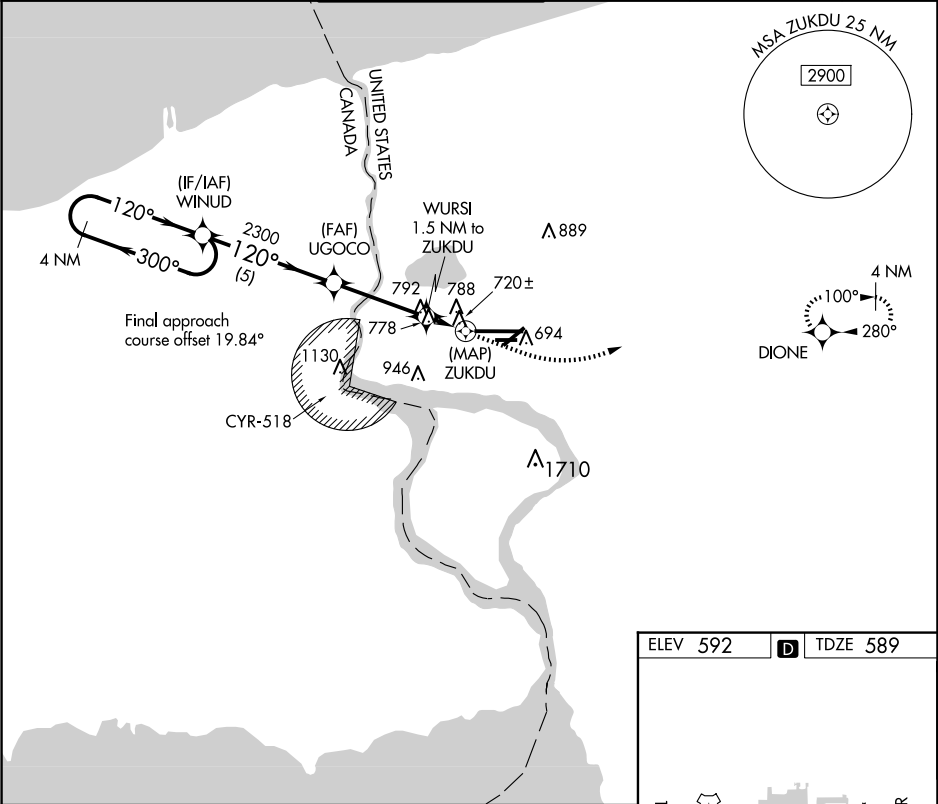
DME/DME RNP-0.3 NA. VDP NA with Buffalo Niagara Intl altimeter setting. When local altimeter setting not received, use Buffalo Niagara Intl altimeter setting and increase all MDA 60 feet.

⚠

Increase LP Cats C/D and Circling Cats C/D visibility ¼ mile. Rwy 10L helicopter visibility reduction below ¾ SM NA. Rwy 6, 10R, 24, 28L helicopter visibility reduction below 1 SM NA. Circling Rwy 6, 10R, 24, 28L NA at night.

MISSED APPROACH: Climb to 1100 then climbing left turn to 3600 direct DIONE and hold.

ATIS 120.8 269.4	BUFFALO APP CON 126.5 317.6	NIAGARA TOWER ★ 118.5 (CTAF) 0 349.0	GND CON 125.3 275.8	CLNC DEL 119.25 251.1	UNICOM 122.95
----------------------------	---------------------------------------	------------------------------------------------	-------------------------------	---------------------------------	-------------------------



4 NM Holding Pattern

VGSI and descent angles not coincident (VGSI Angle 3.00/TCH 50).

WINUD

UGOCO

WURSI 1.5 NM to ZUKDU

ZUKDU

1100

3600

DIONE

3100

300°

120°

2300

1220

5 NM

3.5 NM

0.9 NM

0.6 NM

0.5

ELEV 592

D

TDZE 589

10L

9826 X 150

3972 X 78

28L

28R

TWR 651

CATEGORY	A	B	C	D
LP MDA	980-1	391 (400-1)	980-1½	391 (400-1½)
LNAV MDA	1040-1	451 (500-1)	1040-1¾	451 (500-1¾)
CIRCLING	1100-1	508 (600-1)	1280-2	1280-2¼
			688 (700-2)	688 (700-2¼)

TDZ/CL Rwy 28R

REIL Rws 6,10R, 24, and 28L

HIRL Rwy 10L-28R

MIRL Rws 6-24 and 10R-28L