

LOC I- <b>IAG</b>	APP CRS	Rwy ldg	<b>9129</b>
<b>110.1</b>	<b>280°</b>	TDZE	<b>588</b>
		Apt Elev	<b>592</b>

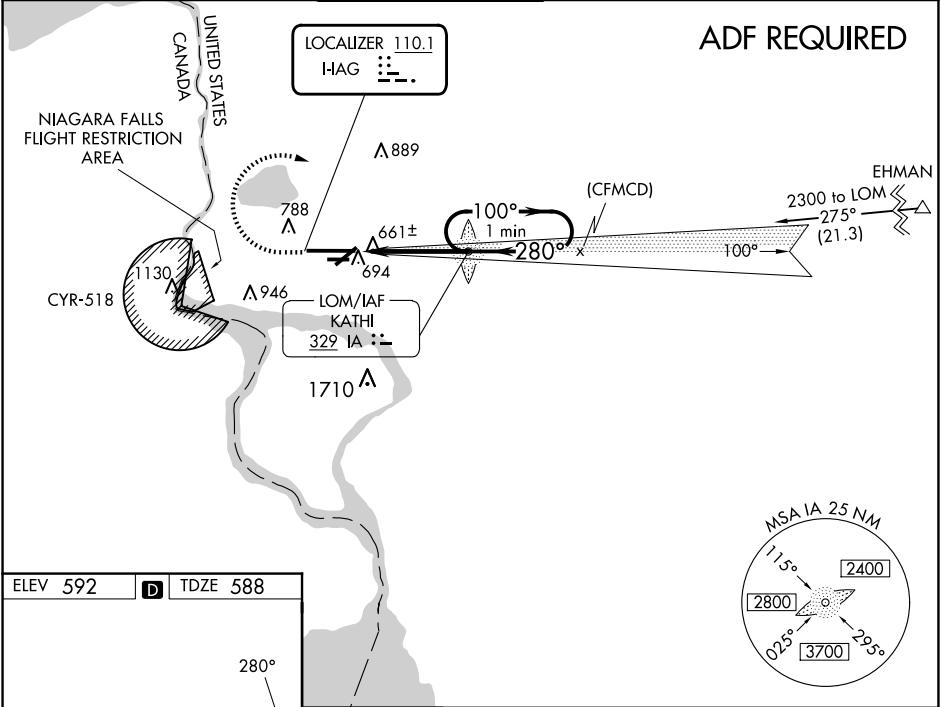
ILS Y or LOC Y RWY 28R  
NIAGARA FALLS INTL (IAG)

**⚠** ADF Required. When local altimeter setting not received, use Buffalo Niagara Intl altimeter setting and increase all DA 51 feet and all MDA 60 feet; increase Circling Cat C and D visibility ¼ SM. For inop MALSR, increase S-ILS 28R all Cats visibility to RVR 4500 and S-LOC 28R all Cats visibility to RVR 5000. For inop MALSR when using Buffalo Niagara Intl altimeter setting, increase S-ILS 28R all Cats visibility to RVR 4500, S-LOC 28R Cats A/B visibility to RVR 5000, and S-LOC 28R Cats C/D visibility to RVR 6000. Rwy 28R helicopter visibility reduction below ¾ SM NA. Rwy 6, 10R, 24, 28L helicopter visibility reduction below 1 SM NA. Circling Rwy 6, 10R, 24, 28L NA at night.

MALSR

MISSED APPROACH:  
Climb to 1200 then  
climbing right turn to  
3200 on heading 050°  
then direct KATHI LOM  
and hold.

ATIS	BUFFALO APP CON	NIAGARA TOWER★	GND CON	CLNC DEL	UNICOM
<b>120.8 269.4</b>	<b>126.5 317.6</b>	<b>118.5 (CTAF) 0 349.0</b>	<b>125.3 275.8</b>	<b>119.25 251.1</b>	<b>122.95</b>



ELEV 592    **D**    TDZE 588

TDZ/CL Rwy 28R ①  
REIL Rws 6,10R, 24, and 28L ①  
HIRL Rwy 10L-28R ①  
MIRL Rws 6-24 and 10R-28L ①

FAF to MAP 4.1 NM

Knots	60	90	120	150	180
Min:Sec	4:06	2:44	2:03	1:38	1:22

1200    3200    **IA**

IA LOM

1763

One Minute Holding Pattern

CATEGORY	A	B	C	D
S-ILS 28R	838/40 250 (300-¾)			
S-LOC 28R	920/40 332 (400-¾)			
<b>C</b> CIRCLING	1100-1 508 (600-1)		1280-2 688 (700-2)	1280-2 ¼ 688 (700-2 ¼)

ILS Y or LOC Y RWY 28R

NE-2, 10 JUL 2025 to 07 AUG 2025

NE-2, 10 JUL 2025 to 07 AUG 2025