

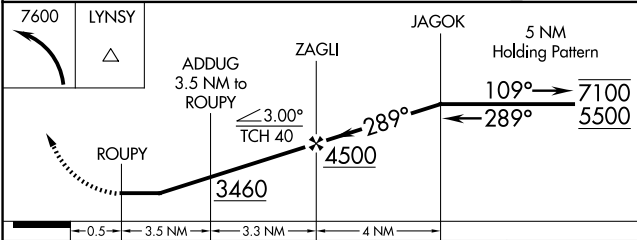
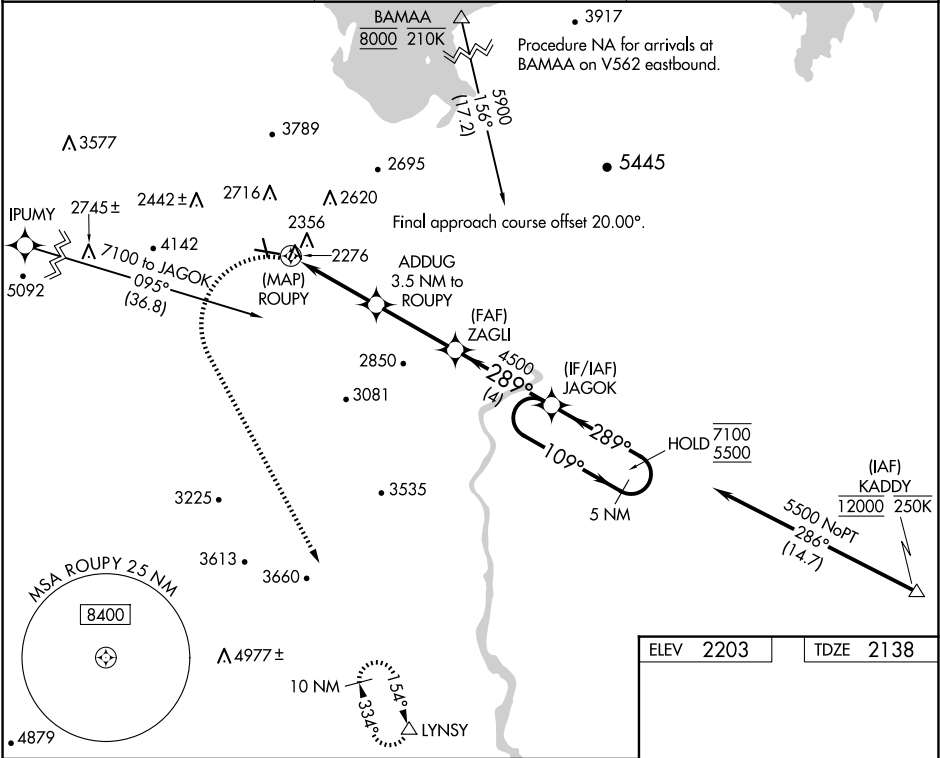
WAAS CH 77643 W27A	APP CRS 289°	Rwy Idg TDZE Apt Elev	4803 2138 2203
--	------------------------	-----------------------------	---

RNAV (GPS) RWY 27

BOULDER CITY MUNI (BVU)

RNP APCH.	MISSED APPROACH: Climbing left turn to 7600 direct LYNZY and hold, continue climb-in-hold to 7600.
<div>Procedure NA at night. Rwy 27 helicopter visibility reduction below 1 SM NA.</div>	

AWOS-3 118.475	LAS VEGAS APP CON 125.475 307.25	UNICOM 122.7 (CTAF) 1
--------------------------	--	---------------------------------



ELEV 2203

TDZE 2138

MIRL Rwy 9-27 and 15-33 1

REIL Rwy 9, 15, 27 and 33

SW-4, 10 JUL 2025 to 07 AUG 2025

SW-4, 10 JUL 2025 to 07 AUG 2025