

APP CRS
134°

Rwy Idg **12467**
TDZE **13**
Apt Elev **13**

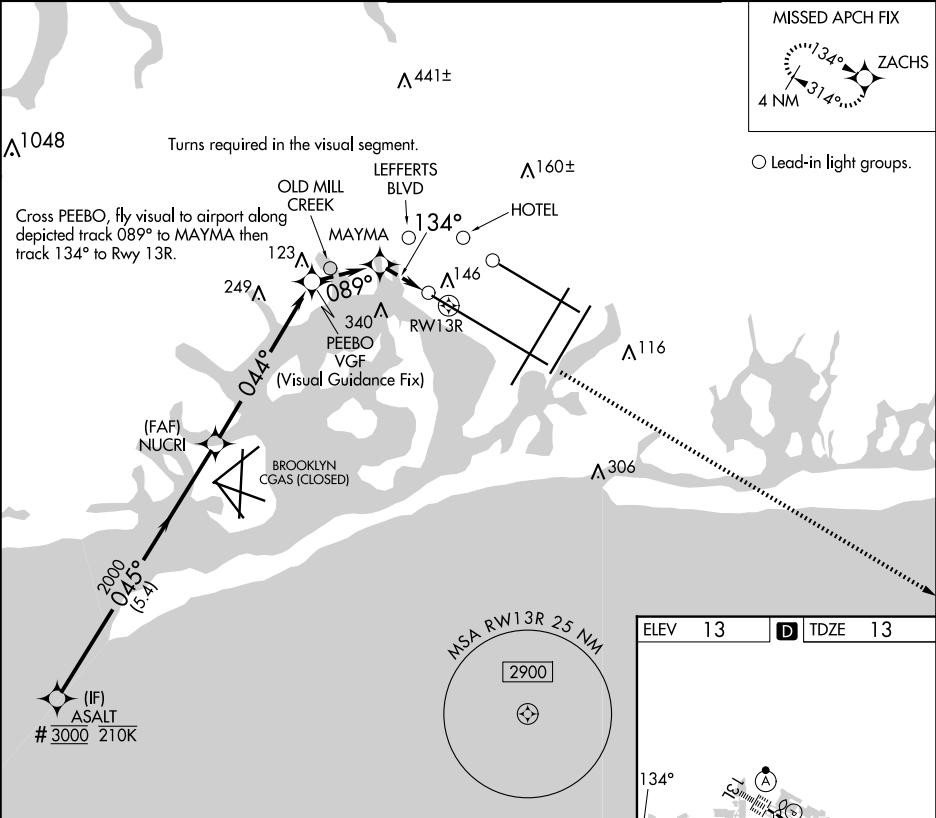
RNAV (GPS) Z RWY 13R
JOHN F KENNEDY INTL (JFK)

RNP APCH - GPS.

RADAR required.

MISSED APPROACH: (Do not exceed 185K until RW13R)
Climb to 1300 on the extended visual approach track to RW13R, then climb to 2000 direct ZACHS and hold.

| D-ATIS (ARR/DEP) (ARR-NE) (ARR-SW) | NEW YORK APP CON | KENNEDY TOWER Rwys 4R/22L and 13L/31R Rwys 4L/22R and 13R/31L | GND CON | CLNC DEL | CPDLC |
|---------------------------------------|------------------|---|-------------|--------------|-------|
| 128.725 117.7 115.4 | 128.125 269.0 | 119.1 281.55 123.9 281.55 | 121.9 348.6 | 135.05 348.6 | |



VGSI and descent angles not coincident (VGSI Angle 3.00/TCH 79).

1300 2000 ZACHS

ASALT #3000

NUCRI 2000

PEEBO *921

MAYMA *520

* Check Alt. RW13R

2000 minimum when authorized by ATC.

3.00° TCH 50

5.4 NM 3.4 NM 1.3 NM 1.4 NM

| CATEGORY | A | B | C | D |
|-----------|--------------------|---|---|---|
| LNNAV MDA | 940-3 927 (1000-3) | | | |

RLLS Rwys 13L and 13R
HIRL all Rwys
TDZ/CL Rwys 4L, 4R, 13L, 22L and 31R