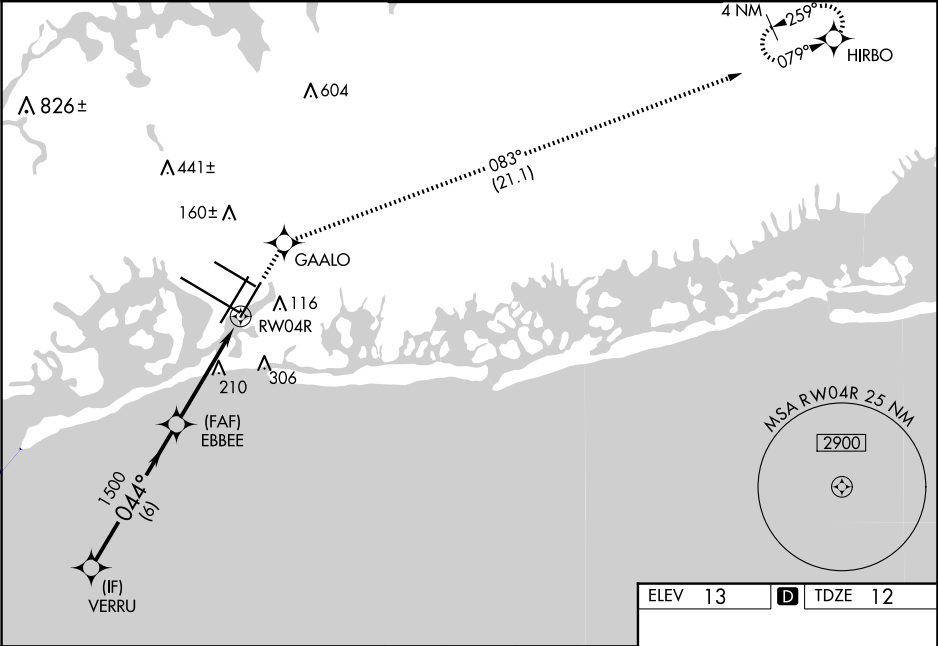


WAAS CH <b>81819</b> <b>W04B</b>	APP CRS <b>044°</b>	Rwy Idg <b>8400</b> TDZE <b>12</b> Apt Elev <b>13</b>
--	------------------------	---

RNAV (GPS) Y RWY 4R

JOHN F KENNEDY INTL (JFK)

RNP APCH.		ALSIF-2		MISSED APPROACH: (Do not exceed 210K until GAALO) Climb to 4000 direct GAALO and on track 083° to HIRBO and hold.	
▼ Simultaneous approach authorized. LNAV procedure NA during simultaneous operations. Use of FD or AP providing RNAV track guidance required during simultaneous operations. For uncompensated Baro-VNAV systems, LNAV/VNAV NA below -12°C or above 54°C. For inop ALS, increase LNAV/VNAV all Cats visibility to RVR 6000 and LNAV Cat C/D visibility to 1½ SM.		D-ATIS (ARR/DEP) (ARR-NE) (ARR-SW) <b>128.725 117.7 115.4</b>		KENNEDY TOWER Rwys 4R/22L and 13L/31R <b>119.1 281.55</b> Rwys 4L/22R and 13R/31L <b>123.9 281.55</b>	
NEW YORK APP CON <b>128.125 269.0</b>		GND CON <b>121.9 348.6</b>		CLNC DEL <b>135.05 348.6</b>	
				CPDLC	



VGSI and RNAV glidepath not coincident (VGSI Angle 3.00/TCH 69).				4000	GAALO	tr 083°	HIRBO
VERRU							
2000							
GP 3.00° TCH 53							
044°							
1500							
EBBEE							
*1.4 NM to RWY 04R							
RWY 04R							
*LNAV only							
6 NM				3.1 NM	1.4 NM		
CATEGORY	A	B	C	D			
LPV DA	212/18		200 (200-½)				
LNAV/VNAV DA	369/40		357 (400-¾)				
LNAV MDA	520/24 508 (600-½)		520/55 508 (600-1)				
CIRCLING	640-1 627 (700-1)		680-1¾ 667 (700-1¾)		680-2 667 (700-2)		

