

WAAS CH <b>97318</b> <b>W22A</b>	APP CRS <b>224°</b>	Rwy Idg <b>8400</b> TDZE <b>12</b> Apt Elev <b>13</b>
--	------------------------	---

## RNAV (GPS) Y RWY 22L

JOHN F KENNEDY INTL (JFK)

RNP APCH.

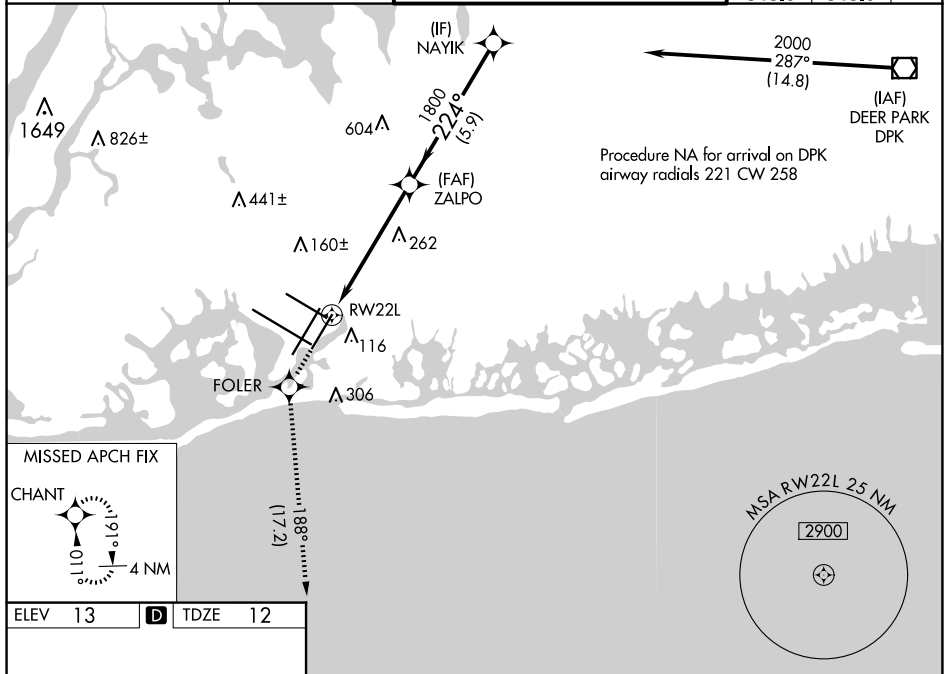
**▼** Simultaneous approach authorized. LNAV procedure NA during simultaneous operations. Use of FD or AP providing RNAV track guidance required during simultaneous operations. For uncompensated Baro-VNAV systems, LNAV/VNAV NA below -12°C or above 54°C. For inop ALS, increase LNAV/VNAV all Cnts visibility to RVR 6000.

ALSF-2

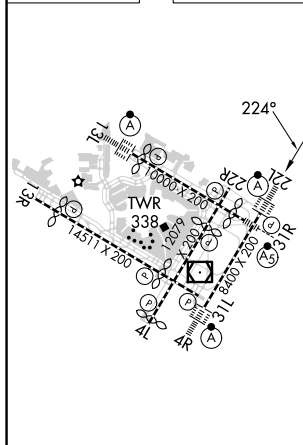


**MISSED APPROACH:** Climb to 3000 direct FOLER and on track 188° to CHANT and hold.

D-ATIS (ARR/DEP) (ARR-NE) (ARR-SW)	NEW YORK APP CON	KENNEDY TOWER		GND CON	CLNC DEL	CPDLC
128.725 117.7 115.4	128.125 269.0	Rwys 4R/22L and 13L/31R Rwys 4L/22R and 13R/31L	119.1 281.55 123.9 281.55	121.9 348.6	135.05 348.6	



ELEV	13	<b>D</b>	TDZE	12
------	----	----------	------	----



3000 ↑		FOLER ✦		tr 188° ✦		CHANT ✦		VGSI and RNAV glidepath not coincident (VGSI Angle 3.00°/TCH 66).	
*LNAV only.		RW22L		1.5 NM to RW22L		ZALPO 1800		NAYIK 2000 22°	
1.5		4 NM		5.9 NM				GP 3.00° TCH 53	
CATEGORY		A		B		C		D	
LPV DA		269/18		257 (300-½)					
LNAV/ VNAV		DA		419/50		407 (500-1)			
LNAV MDA		560/24		548 (600-½)		560/60		548 (600-1¼)	
CIRCLING		640-1		627 (700-1)		680-1¾ 667 (700-1¾)		680-2 667 (700-2)	