

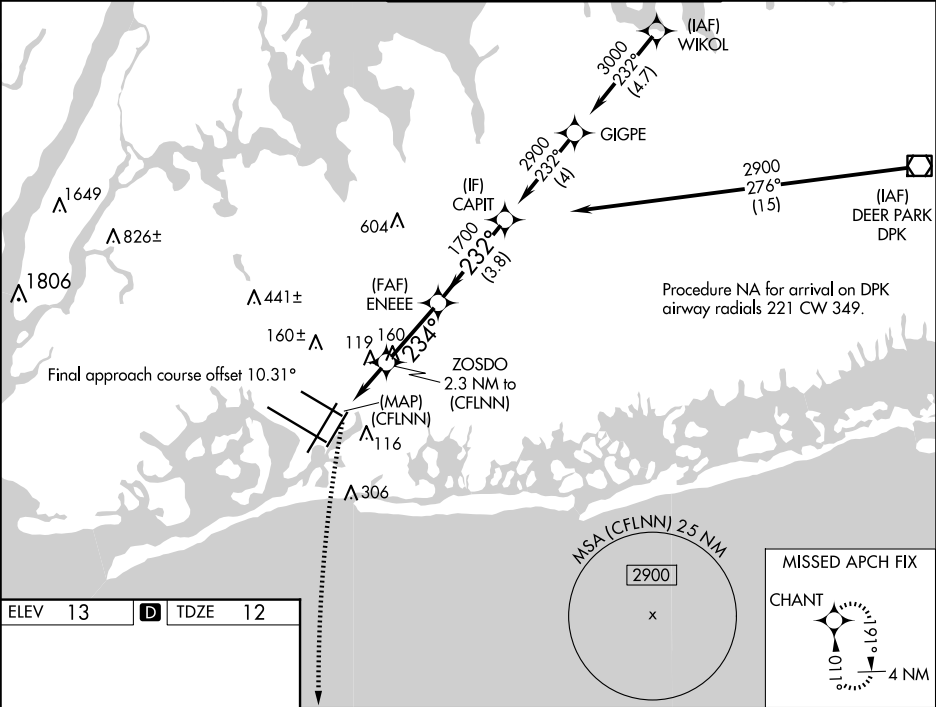
APP CRS	Rwy Idg	8400
234°	TDZE	12
	Apt Elev	13

RNAV (GPS) X RWY 22L

JOHN F KENNEDY INTL (JFK)

RNP APCH - GPS.	ALSF-2	MISSED APPROACH: Climbing left turn to 3000 direct CHANT and hold.
<div>For uncompensated Baro-VNAV systems, LNAV/VNAV NA below -14°C or above 54°C. For inop ALS, increase LNAV/VNAV all Cats visibility to RVR 6000.</div>	<div></div>	

D-ATIS (ARR/DEP) (ARR-NE) (ARR-SW)	NEW YORK APP CON	KENNEDY TOWER	GND CON	CLNC DEL	CPDLC
128.725 117.7 115.4	128.125 269.0	Rwys 4R/22L and 13L/31R 119.1 281.55 Rwys 4L/22R and 13R/31L 123.9 281.55	121.9 348.6	135.05 348.6	



ELEV 13	TDZE 12
---------	---------

<div></div>	<div>3000 CHANT VGSI and RNAV glidepath not coincident (VGSI Angle 3.00/TCH 66).</div>
<div>*LNAV only.</div>	<div>ZOSDO ENEEE 1700 232° 2900</div>
<div>*1.1 NM to 2.3 NM to (CFLNN)</div>	<div>GP 3.00° TCH 55</div>
<div>(CFLNN)</div>	<div>800*</div>
<div>1.1 NM 1.2 NM 2.8 NM 3.8 NM</div>	
CATEGORY	A B C D
LNAV/VNAV DA	413/40 401 (400-¾)
LNAV MDA	440/24 428 (500-½) 440/40 428 (500-¾)
CIRCLING	640-1 627 (700-1) 680-1¾ 667 (700-1¾) 680-2 667 (700-2)