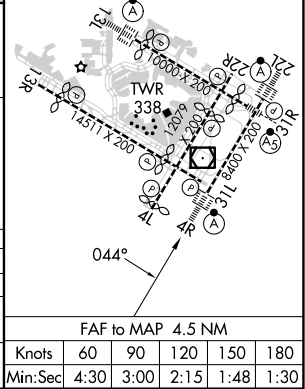
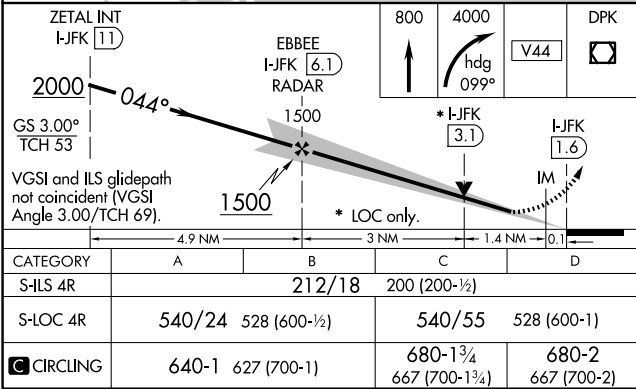
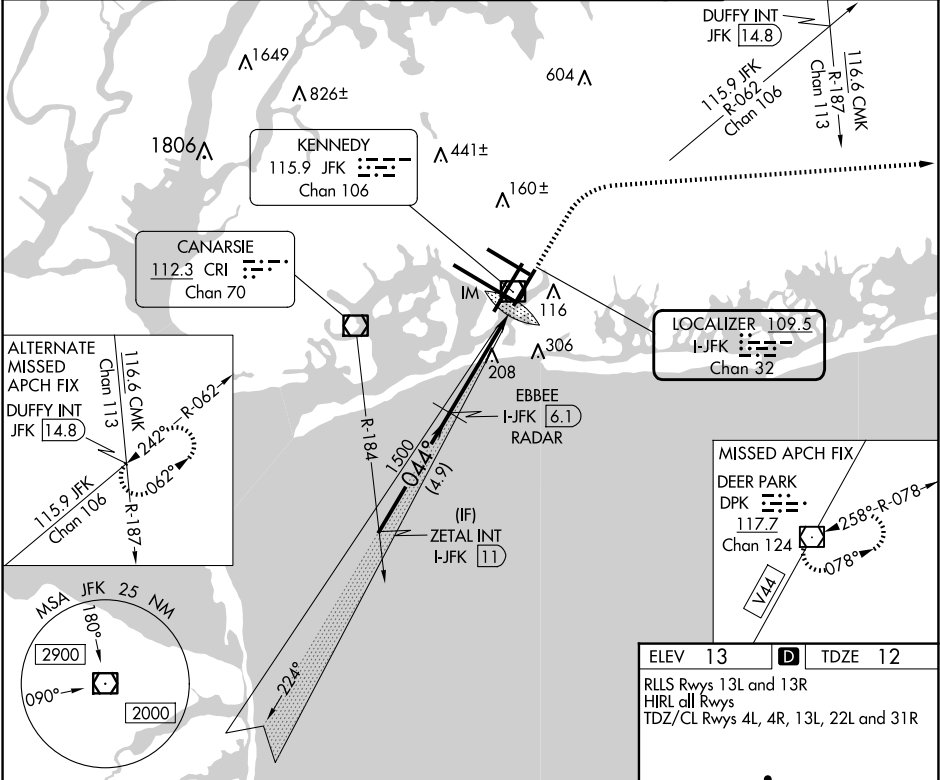


LOC/DME I-JFK	APP CRS	Rwy Idg
109.5	044°	8400
Chan 32	TDZE	12
	Apt Elev	13

ILS or LOC RWY 4R
JOHN F KENNEDY INTL (JFK)

RADAR required for procedure entry.	ALSIF-2	MISSED APPROACH: Climb to 800 then climbing right turn to 4000 heading 099° and V44 to DPK VOR/DME and hold.
Simultaneous approach authorized.		

D-ATIS (ARR/DEP) (ARR-NE) (ARR-SW)	NEW YORK APP CON	KENNEDY TOWER	GND CON	CLNC DEL	CPDLC
128.725 117.7 115.4	128.125 269.0	Rwys 4R/22L and 13L/31R 119.1 281.55 Rwys 4L/22R and 13R/31L 123.9 281.55	121.9 348.6	135.05 348.6	



NE-2, 10 JUL 2025 to 07 AUG 2025

NE-2, 10 JUL 2025 to 07 AUG 2025