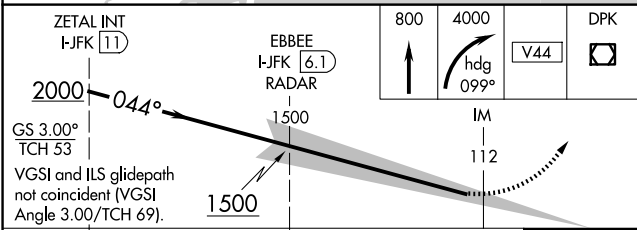
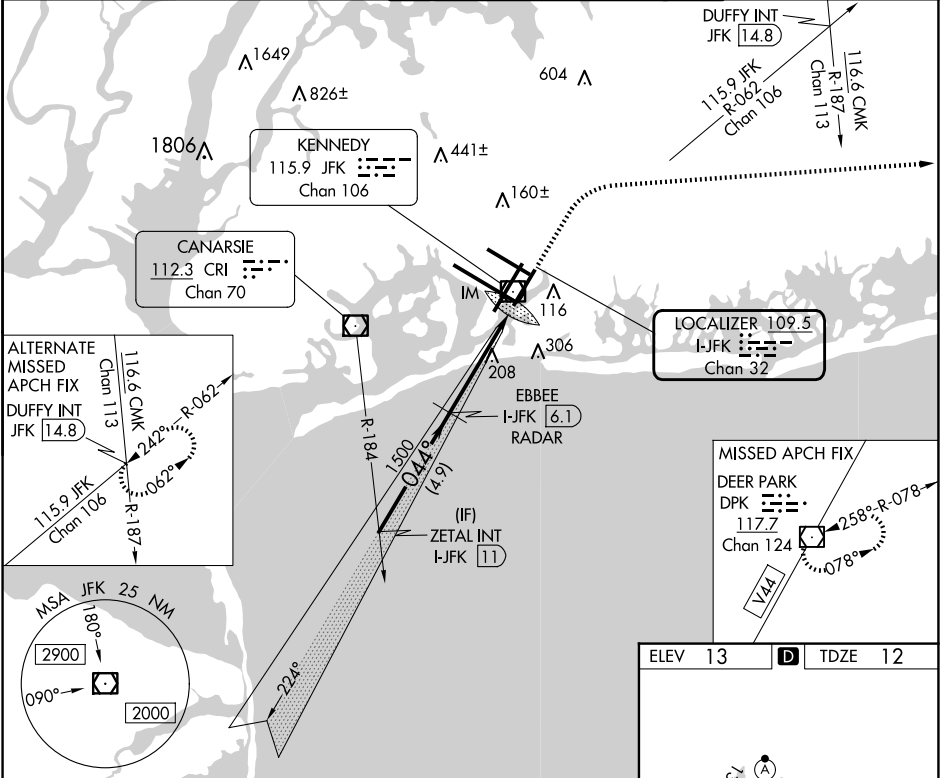


LOC/DME I-JFK	APP CRS	Rwy Idg	8400
109.5	044°	TDZE	12
Chan 32		Apt Elev	13

ILS RWY 4R (CAT II & III)  
JOHN F KENNEDY INTL (JFK)

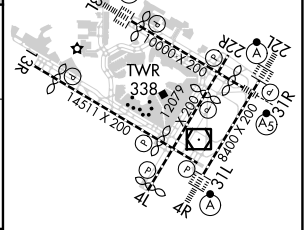
RADAR required for procedure entry.		ALSIF-2	MISSED APPROACH: Climb to 800 then climbing right turn to 4000 heading 099° and V44 to DPK VOR/DME and hold.
Simultaneous approach authorized.			

D-ATIS (ARR/DEP) (ARR-NE) (ARR-SW)	NEW YORK APP CON	KENNEDY TOWER Rwys 4R/22L and 13L/31R	GND CON	CLNC DEL	CPDLC
128.725 117.7 115.4	128.125 269.0	119.1 281.55 Rwys 4L/22R and 13R/31L 123.9 281.55	121.9 348.6	135.05 348.6	



CATEGORY	A	B	C	D
S-ILS 4R	CAT II RA 112/12 100 DA 112			
S-ILS 4R	CAT III RVR 06			

CATEGORY II & III ILS - SPECIAL AIRCREW  
& AIRCRAFT CERTIFICATION REQUIRED



CATEGORY	A	B	C	D
S-ILS 4R	CAT II RA 112/12 100 DA 112			
S-ILS 4R	CAT III RVR 06			

CATEGORY II & III ILS - SPECIAL AIRCREW  
& AIRCRAFT CERTIFICATION REQUIRED