

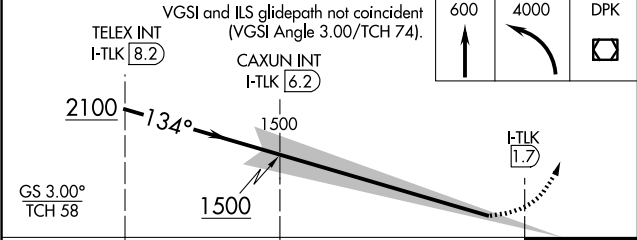
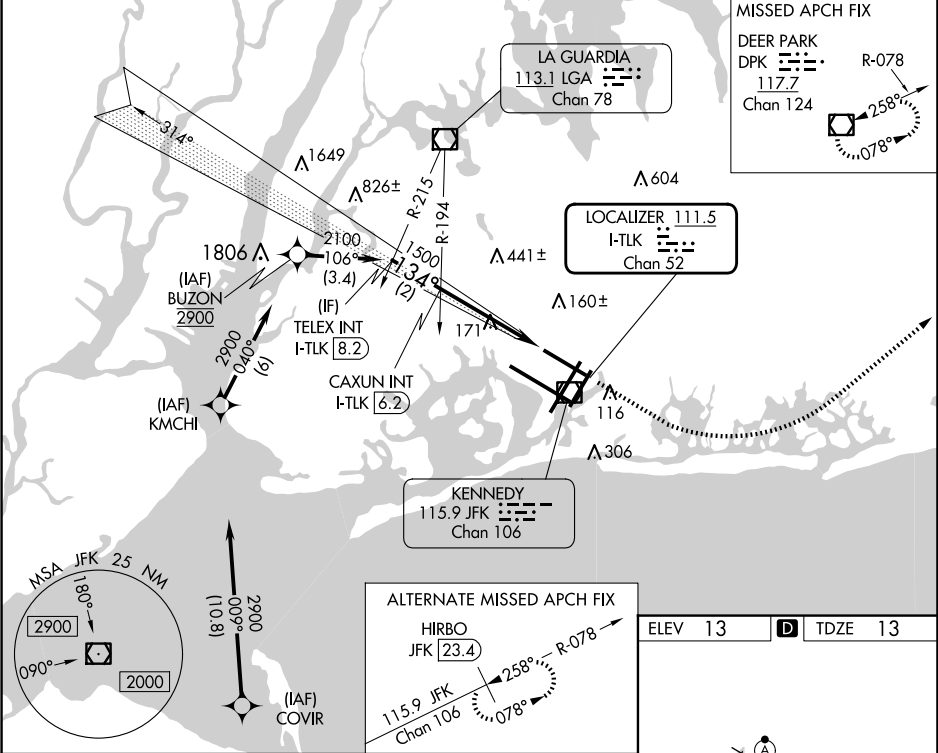
|                |             |                    |
|----------------|-------------|--------------------|
| LOC/DME I-TLK  | APP CRS     | Rwy ldg            |
| <b>111.5</b>   | <b>134°</b> | <b>9093</b>        |
| Chan <b>52</b> |             | TDZE <b>13</b>     |
|                |             | Apt Elev <b>13</b> |

ILS RWY 13L (CAT II)

JOHN F KENNEDY INTL (JFK)

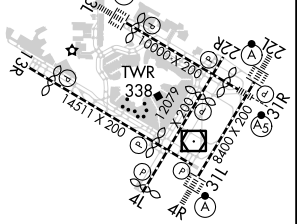
|   |        |  |
|---|--------|--|
| RNAV 1-GPS or RADAR required for procedure entry. | ALSF-2 | MISSED APPROACH: Climb to 600 then climbing left turn to 4000 direct DPK VOR/DME and hold. |
| From COVIR, KMCHI, BUZON: RNAV-1 GPS required.    |        |  |
|   |        |  |

|                                       |                      |  |                    |                     |       |
|---------------------------------------|----------------------|--|--------------------|---------------------|-------|
| D-ATIS<br>(ARR/DEP) (ARR-NE) (ARR-SW) | NEW YORK APP CON     | KENNEDY TOWER  | GND CON            | CLNC DEL            | CPDLC |
| <b>128.725 117.7 115.4</b>            | <b>128.125 269.0</b> | Rwys 4R/22L and 13L/31R <b>119.1 281.55</b><br>Rwys 4L/22R and 13R/31L <b>123.9 281.55</b> | <b>121.9 348.6</b> | <b>135.05 348.6</b> |       |



|           |   |           |            |   |
|-----------|---|-----------|------------|---|
| CATEGORY  | A | B         | C          | D |
| S-ILS 13L |   | RA 150/16 | 150 DA 163 |   |

CATEGORY II ILS - SPECIAL AIRCREW & AIRCRAFT CERTIFICATION REQUIRED



RLS Rwys 13L and 13R  
HIRL all Rwys  
TDZ/CL Rwys 4L, 4R, 13L, 22L and 31R