

WAAS CH <b>49006</b> <b>W29A</b>	APP CRS <b>287°</b>	Rwy Ldg <b>9800</b> TDZE <b>2</b> Apt Elev <b>4</b>
--	------------------------	---

## RNAV (GPS) Y RWY 29

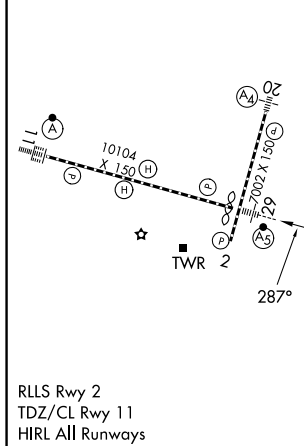
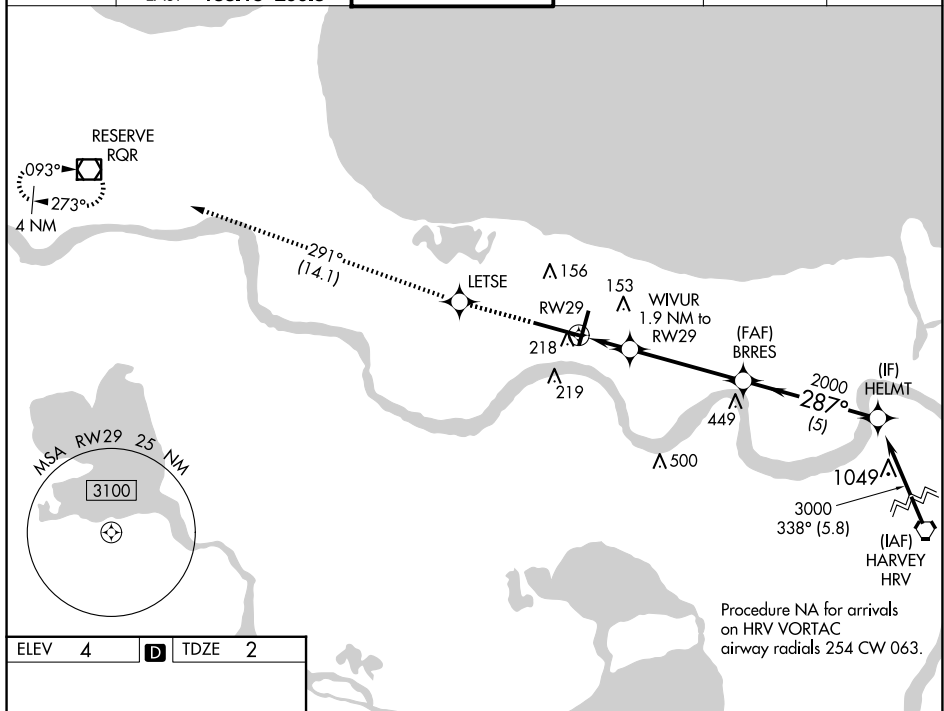
LOUIS ARMSTRONG NEW ORLEANS INTL (MSY)

**T** For uncompensated Baro-VNAV systems, LNAV/VNAV NA below -1°C (31°F) or above 54°C (130°F). DME/DME RNP-0.3 NA. For inop MALSR, increase LNAV Cat C/D visibility to 1½ mile.  
**\*\*RVR 1800** authorized with use of FD or AP or HUD to DA.

MALSR

**MISSED APPROACH:** Climb to 3000  
direct LETSE and on track 291° to  
RQR VOR/DME and hold.

D-ATIS <b>127.55</b>	NEW ORLEANS APP CON WEST <b>125.5 350.35</b> EAST <b>133.15 290.3</b>	NEW ORLEANS TOWER <b>119.5 254.3</b>	GND CON <b>121.9 273.525</b>	CLNC DEL <b>120.925</b>	CPDLC
-------------------------	---	---	---------------------------------	----------------------------	-------



3000 ↑	LETSE ✦	tr 291°	RQR ◻	VGS1 and RNAV glidepath not coincident (VGS1 Angle 3.00°/TCH 68).			
*LNAV only.							
CATEGORY	A		B		C		D
LPV DA**			202/24		200 (200-½)		
LNAV/ VNAV	DA		380/40		378 (400-¾)		
LNAV MDA	480/24		478 (500-½)		480/50		478 (500-1)
CIRCLING	520-1		516 (600-1)		580-1½ 576 (600-1½)		600-2 596 (600-2)