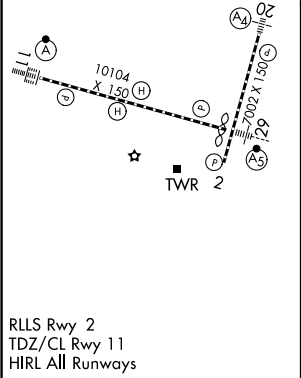
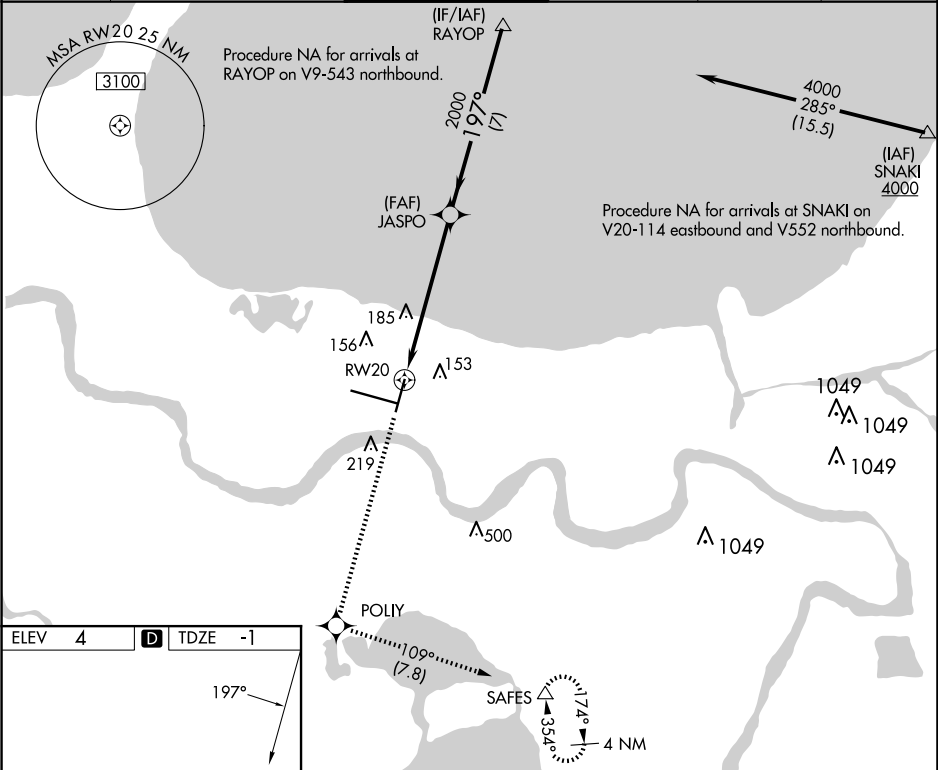


WAAS CH 40007 W20A	APP CRS 197°	Rwy Ldg 6948 TDZE -1 Apt Elev 4
--	------------------------	--

RNAV (GPS) Y RWY 20

LOUIS ARMSTRONG NEW ORLEANS INTL (MSY)

RNP APCH - GPS.			MALS 	MISSED APPROACH: Climb to 2000 direct POLIY and on track 109° to SAFES and hold.	
D-ATIS 127.55	NEW ORLEANS APP CON WEST 125.5 350.35 EAST 133.15 290.3	NEW ORLEANS TOWER 119.5 254.3	GND CON 121.9 273.525	CLNC DEL 120.925	CPDLC



2000 ↑	POLY ✱	tr 109°	SAFES △				
-----------	-----------	------------	------------	--	--	--	--