

APP CRS
197°

Rwy Ldg
6948

TDZE
-1

Apt Elev
4

RNAV (RNP) Z RWY 20

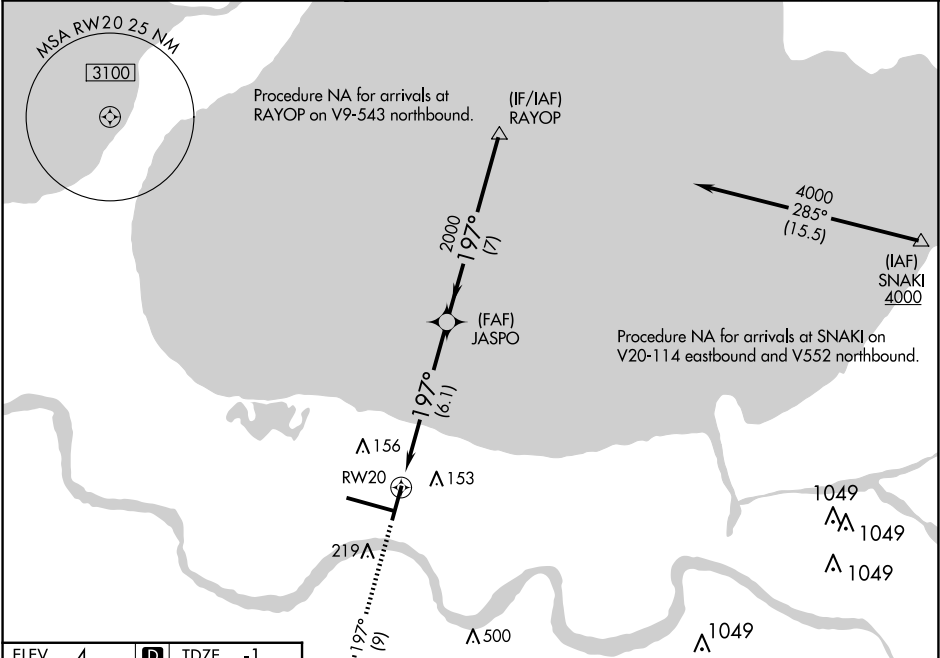
LOUIS ARMSTRONG NEW ORLEANS INTL (MSY)

RNP AR APCH - GPS.
▼ For uncompensated Baro-VNAV systems, procedure NA below -1°C or above 54°C. For inop ALS, increase RNP 0.30 all Cats visibility to RVR 6000.

MALS
A4

MISSED APPROACH: Climb to 2000 on track 197° to POLY and track 109° to SAFES and hold.

D-ATIS 127.55	NEW ORLEANS APP CON WEST 125.5 350.35 EAST 133.15 290.3	NEW ORLEANS TOWER 119.5 254.3	GND CON 121.9 273.525	CLNC DEL 120.925	CPDLC
------------------	---	----------------------------------	--------------------------	---------------------	-------



ELEV 4 D TDZE -1

RLLS Rwy 2
TDZ/CL Rwy 11
HIRL All Runways

MISSED APCH FIX
SAFES
174°
354°
4 NM

2000	tr 197°	POLY	tr 109°	SAFES	RAYOP	4000
		JASPO	2000	197°		
		RW20	2000			GP 3.00° TCH 52
		6.1 NM	7 NM			
CATEGORY	A	B	C	D		
RNP 0.11 DA	363/40		364 (400-¾)			
RNP 0.30 DA	414/50		415 (500-1)			

AUTHORIZATION REQUIRED