

VORTAC TTH	APP CRS	Rwy Idg	9020
115.3	048°	TDZE	573
Chan 100		Apt Elev	589

VOR RWY 5

TERRE HAUTE RGNL (HUF')

DME required.

ASR

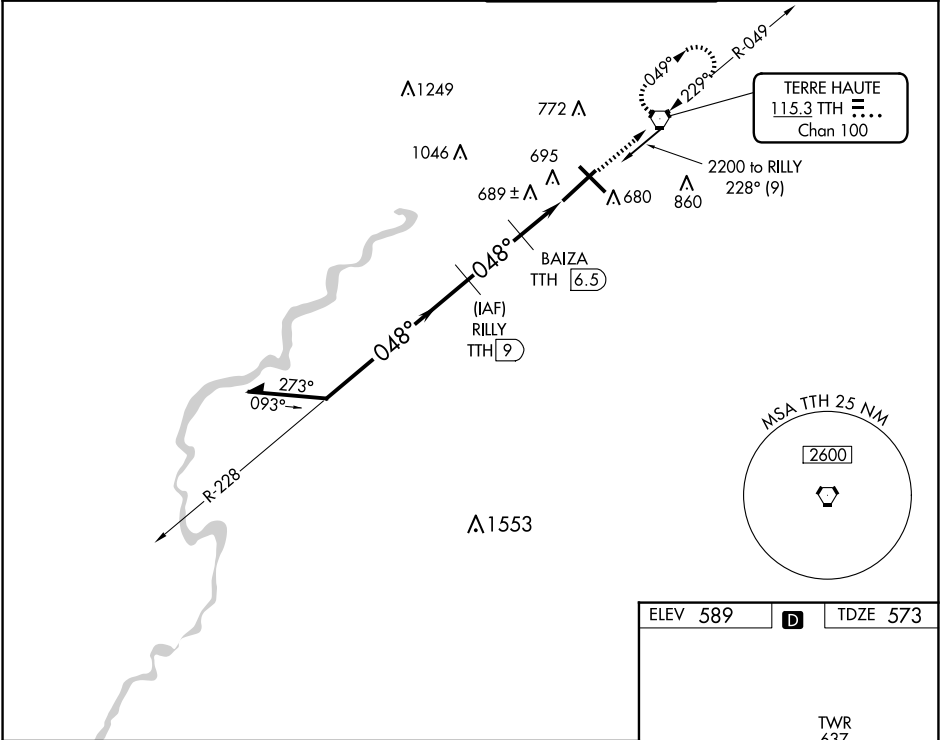
VDP NA when using Paris, IL altimeter setting. When local altimeter setting not received, use Paris altimeter setting and increase all MDA 80 feet and Circling Cat C/D visibility ¼ SM. For inop ALS, increase S-5 Cat C/D visibility to RVR 6000. Rwy 5 helicopter visibility reduction below ¾ SM NA.

MALSR

MISSED APPROACH:

Climb to 2300 direct TTH VORTAC and hold.

ATIS	HULMAN APP CON	HULMAN TOWER	GND CON
127.5 269.375	125.45 339.8	134.725 322.475	121.6 348.6



Remain within 10 NM

RILLY TTH 9 6000

2200

228°

048°

2100

3.10° TCH 50

048°

1280

2.5 NM

1 NM

1 NM

2300 TTH

BAIZA TTH 6.5

TTH 5.5

TTH 4.5

VGSI and descent Angles not coincident (VGSI Angle 3.00/TCH 40).

CATEGORY	A	B	C	D
S-5		960/50	387 (400-1)	
CIRCLING	1040-1	451 (500-1)	1220-1¾ 631 (700-1¾)	1220-2 631 (700-2)

ELEV 589 D TDZE 573

REIL Rwy 14, 23 and 32
HIRL Rwy 5-23 and 14-32