

WAAS CH 72625 W23A	APP CRS 229°	Rwy Idg TDZE 582 Apt Elev 589
--	------------------------	---

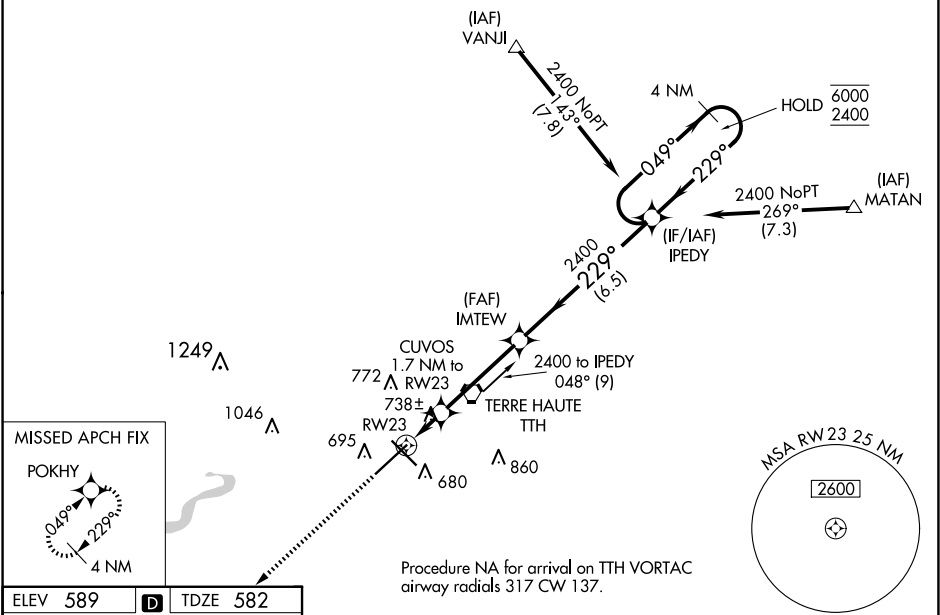
RNAV (GPS) RWY 23
TERRE HAUTE RGNL (HUF')

RNP APCH.

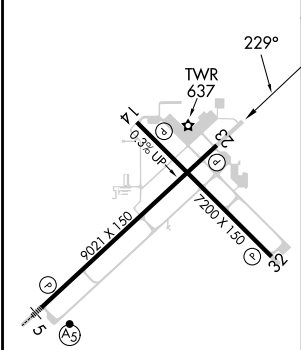
Baro-VNAV and VDP NA when using Paris altimeter setting. Rwy 23 helicopter visibility reduction below ¾ SM NA. For uncompensated Baro-VNAV systems, LNAV/VNAV NA below -16°C or above 54°C. When local altimeter setting not received, use Paris altimeter setting and increase all DA 61 feet and all MDA 80 feet, increase LPV and LNAV/VNAV visibility all Cats ½ SM, increase LNAV and Circling Cats C/D visibilities ¼ SM.

MISSED APPROACH:
Climb to 2600 direct
POKHY and hold.

ATIS 127.5 269.375	HULMAN APP CON 125.45 339.8	HULMAN TOWER 134.725 322.475	GND CON 121.6 348.6
------------------------------	---------------------------------------	--	-------------------------------



ELEV 589	D	TDZE 582
----------	----------	----------



HIRL Rwy 5-23 and 14-32
REIL Rwy 14, 23 and 32

2600 POKHY		VGSi and RNAV glidepath not coincident (VGSi Angle 3.00°/TCH 50).		4 NM Holding Pattern	
*LNAV only		IMTEW 2400		IPEDY	
CUVOS 1.7 NM to RW23		2400		049° 6000	
1.2 NM to RW23		1160		229° 2400	
1.2 NM 0.5 NM		3.8 NM		6.5 NM	
CATEGORY	A	B	C	D	
LPV DA	890-7/8		308 (400-7/8)		
LNAV/VNAV DA	874-7/8		292 (300-7/8)		
LNAV MDA	1000-1	418 (500-1)	1000-1½	418 (500-1½)	
C CIRCLING	1040-1	451 (500-1)	1220-1¾ 631 (700-1¾)	1220-2 631 (700-2)	

EC-2, 10 JUL 2025 to 07 AUG 2025

EC-2, 10 JUL 2025 to 07 AUG 2025