

LOC I-HUF 109.7	APP CRS 049°	Rwy Idg TDZE Apt Elev	9020 573 589
---------------------------	------------------------	-----------------------------	---

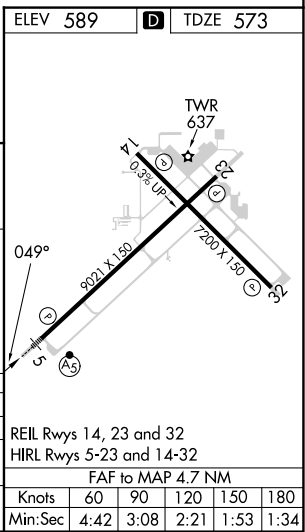
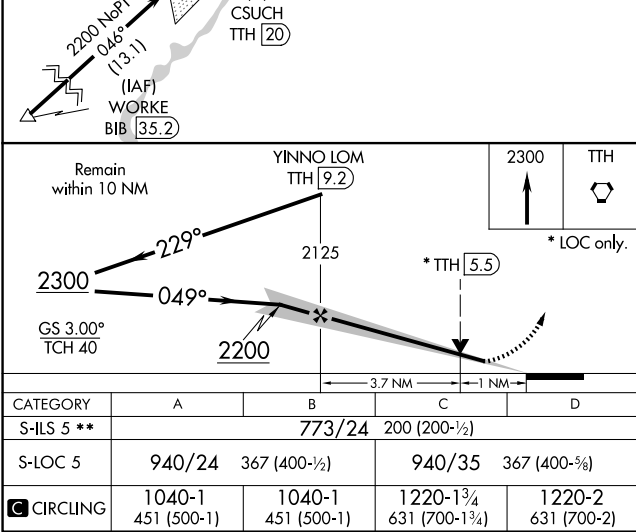
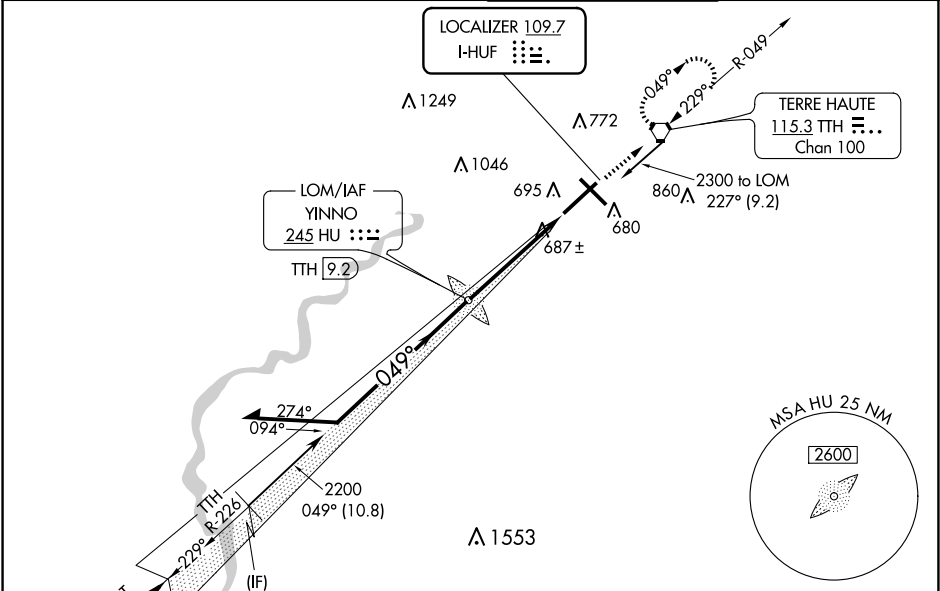
ILS or LOC RWY 5
TERRE HAUTE RGNL (HUF')

ADF or DME required.

V VDP NA when using Paris altimeter setting. When local altimeter setting not received, use Paris altimeter setting and increase all DA 61 feet and all MDA 80 feet, increase S-LOC 5 Cats C/D visibility to RVR 4500. For inop ALS, increase S-LOC 5 Cat C/D visibility to RVR 5500, when using Paris altimeter setting increase S-ILS 5 all Cats visibilities to RVR 4500 and S-LOC Rwy 5 all Cats visibility ½ SM. **RVR 1800 authorized with use of FD or AP or HUD to DA, NA when using Paris altimeter setting.

MALSR MISSED APPROACH: Climb to 2300 direct TTH VORTAC and hold.

ATIS 127.5 269.375	HULMAN APP CON 125.45 339.8	HULMAN TOWER 134.725 322.475	GND CON 121.6 348.6
------------------------------	---------------------------------------	--	-------------------------------



EC-2, 10 JUL 2025 to 07 AUG 2025

EC-2, 10 JUL 2025 to 07 AUG 2025