

WAAS CH <b>69510</b> <b>W03A</b>	APP CRS <b>034°</b>	Rwy Idg TDZE Apt Elev	<b>6500</b> <b>547</b> <b>547</b>
--	------------------------	-----------------------------	---

RNAV (GPS) RWY 3

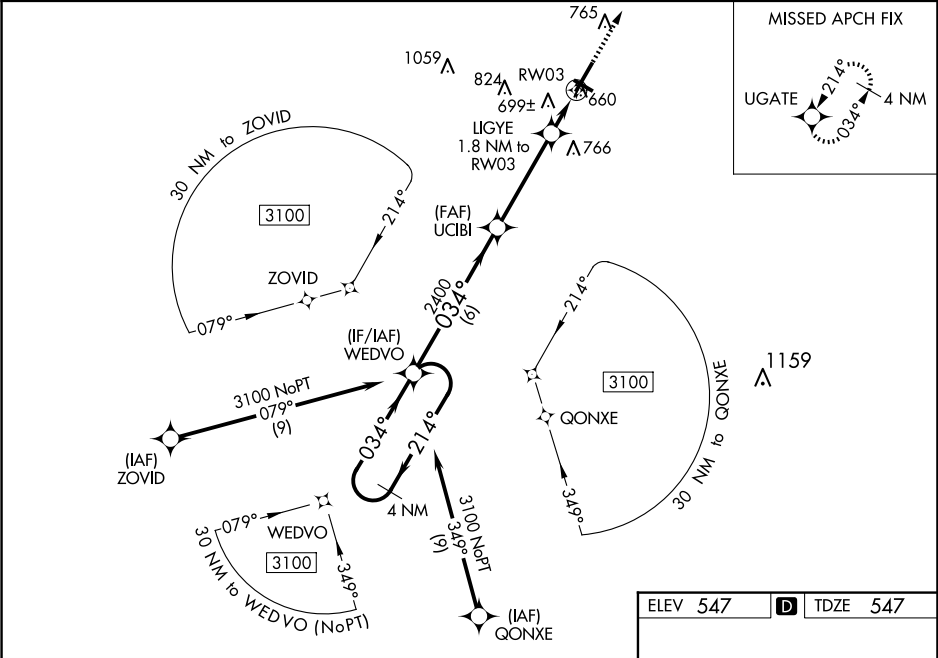
BOWLING GREEN-WARREN COUNTY RGNL (BWG)

⚠

For uncompensated Baro-VNAV systems, LNAV/VNAV NA below -16°C (4°F) or above 54°C (130°F). DME/DME RNP-0.3 NA. Night landing: Rwy 30 NA. When local altimeter setting not received use Glasgow altimeter setting and increase all DA/MDA 80 feet; increase LPV all Cats visibility ½ mile and LNAV/VNAV all Cats ⅓ mile and LNAV Cat C and D and Circling Cat C and D visibility ¼ mile. Helicopter visibility reduction below ¾ SM NA. Baro-VNAV and VDP NA when using Glasgow altimeter setting.

MISSED APPROACH:  
Climb to 3100 direct UGATE and hold.

ASOS <b>127.825</b>	MEMPHIS CENTER <b>133.85 285.5</b>	UNICOM <b>123.0 (CTAF) 0</b>
------------------------	---------------------------------------	---------------------------------



4 NM Holding Pattern		3100 UGATE	
WEDVO		UCIBI	
3100 ← 214°		2400	
→ 034°		LIGYE 1.8 NM to RW03	
GP 3.00° TCH 44		*1160	
← 6 NM		← 0.6 NM	
← 3.9 NM		← 1.2 NM	
CATEGORY	A	B	C
LPV DA	747-¾ 200 (200-¾)		
LNAV/VNAV DA	1009-1⅝ 462 (500-1⅝)		
LNAV MDA	960-1	413 (500-1)	960-1⅝ 413 (500-1⅝)
CIRCLING	1000-1 453 (500-1)	1120-1 573 (600-1)	1160-1¾ 613 (700-1¾) 1200-2 653 (700-2)