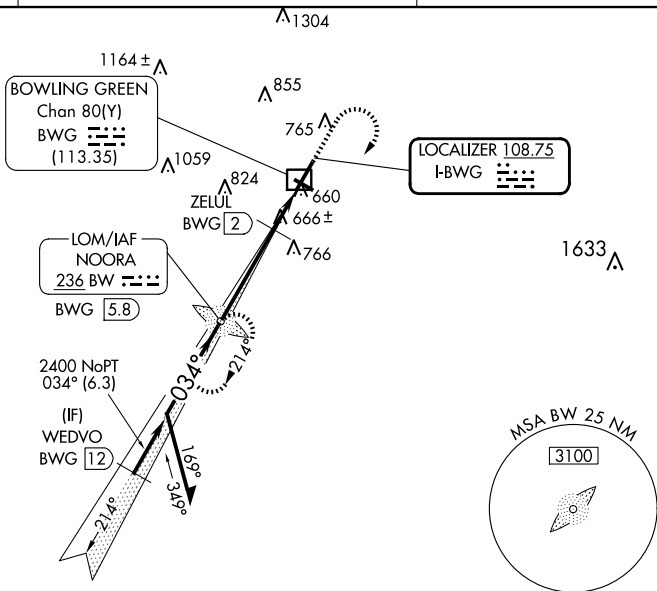


ILS Y or LOC Y RWY 3
BOWLING GREEN-WARREN COUNTY RGNL (BWG)

MISSED APPROACH: Climb to 2000 then climbing right turn to 2400 direct NOORA LOM and hold.

 Circling Rwy 30 NA at night.
 † DME from BWG DME.

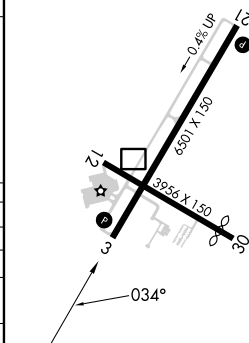
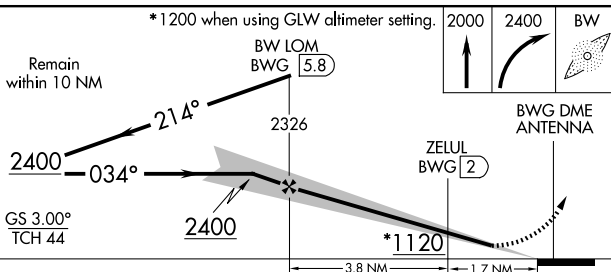
ASOS 127.825	MEMPHIS CENTER 133.85 285.5	UNICOM 123.0 (CTAF) 0
------------------------	---------------------------------------	---------------------------------



SE-1, 10 JUL 2025 to 07 AUG 2025

ELEV 547	D	TDZE 547
----------	----------	----------

REIL Rwy 3 and 21 **L**
MIRL Rwy 12-30
HIRL Rwy 3-21 **L**



CATEGORY	A	B	C	D
S-ILS 3	797-3/4 250 (300-3/4)			
S-LOC 3*	1120-1	573 (600-1)	1120-1 5/8	573 (600-1 5/8)
C CIRCLING	1120-1	573 (600-1)	1160-1 3/4 613 (700-1 3/4)	1200-2 653 (700-2)
ZELUL FIX MINIMUMS† (DME REQUIRED)				
S-LOC 3	920-1 373 (400-1)			
C CIRCLING	1080-1 533 (600-1)	1120-1 573 (600-1)	1160-1 3/4 613 (700-1 3/4)	1200-2 653 (700-2)

FAF to MAP 5.4 NM					
Knots	60	90	120	150	180
Min:Sec	5:24	3:36	2:42	2:10	1:48