

VORTAC SGF <b>116.9</b> Chan <b>116</b>	APP CRS <b>196°</b>	Rwy Idg <b>7003</b> TDZE <b>1262</b> Apt Elev <b>1268</b>
---	------------------------	---

VOR or TACAN RWY 20  
SPRINGFIELD-BRANSON NTL (SGF)

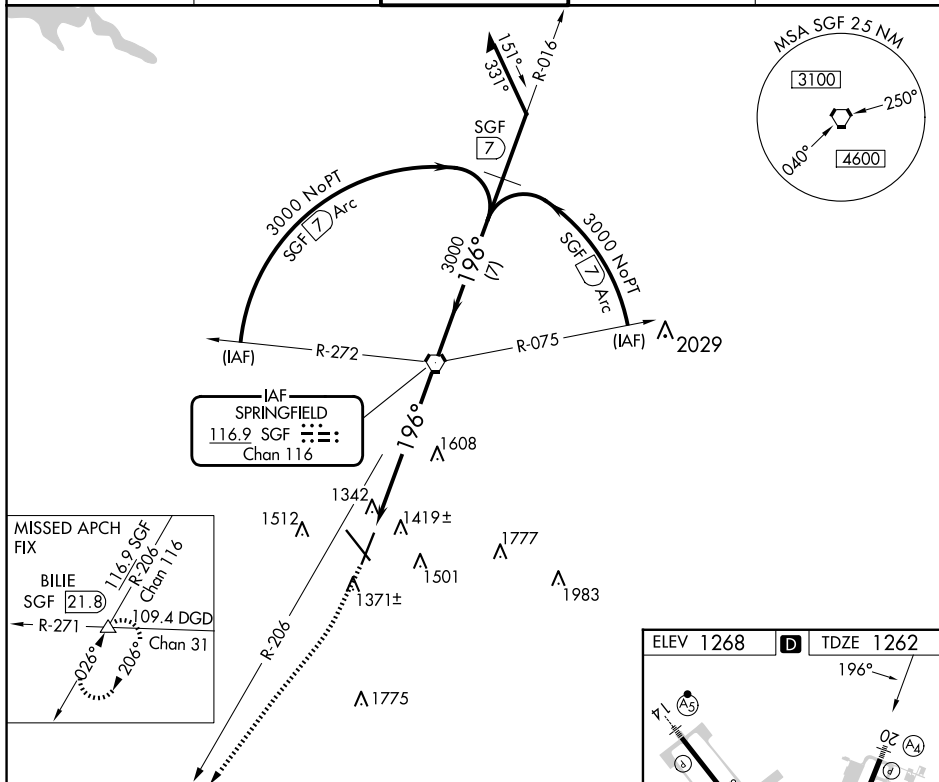
**T** Inoperative table does not apply to Cat C. Helicopter visibility reduction below  $\frac{3}{4}$  SM not authorized. When local altimeter setting not received, use Monett altimeter setting and increase all MDA 100 feet, increase S-20 Cat C/D/E visibility  $\frac{1}{4}$  mile, increase Circling Cat C/E visibility  $\frac{1}{4}$  mile. VDP NA when using Monett altimeter setting.

MALS



**MISSED APPROACH:** Climb to 3000 then right turn to intercept SGF R-206 to BLUE INT/SGF 21.8 DME and hold.

ATIS 135.125	SPRINGFIELD APP CON 124.95 290.5	SPRINGFIELD TOWER 119.9 257.8	GND CON 121.9 251.15	CLNC DEL 123.675
-----------------	-------------------------------------	----------------------------------	-------------------------	---------------------



ELEV 1268 [D] TDZE 1262

196°

A5  
S  
TWR 1361  
V  
Z  
A4  
★  
32

8000 X 150  
7000 X 150

REIL Rwy 32  
HIRL Rwys 2-20 and 14-32

	FAF to MAP 6.5 NM				
Knots	60	90	120	150	180
Min:Sec	6:30	4:20	3:15	2:36	2:10