

WAAS CH <b>72933</b> <b>W32A</b>	APP CRS <b>319°</b>	Rwy Idg TDZE <b>1268</b> Apt Elev <b>1268</b>	<b>8000</b>
--	------------------------	---	-------------

RNAV (GPS) RWY 32

SPRINGFIELD-BRANSON NTL (SGT<sup>F</sup>)

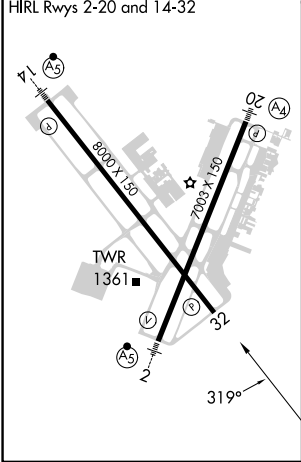
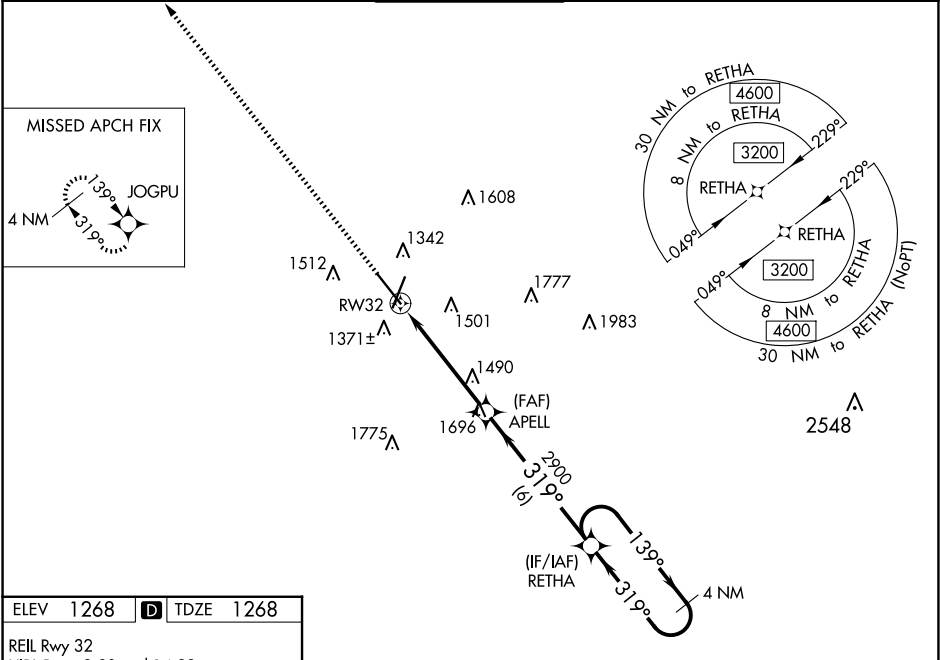
▼

▲

Baro-VNAV and VDP NA when using Monnett altimeter setting. For uncompensated Baro-VNAV systems, LNAV/VNAV NA below -16°C (4°F) or above 54°C (130°F). When local altimeter setting not received, use Monnett altimeter setting and increase all DA 90 feet and all MDA 100 feet; increase LPV all Cts visibility ⅓ mile, LNAV/VNAV all Cts ⅓ mile, LNAV Cts C and D ¼ mile and Circling Cat C ¼ mile and Cat D ½ mile. DME/DME RNP- 0.3 NA.

MISSED APPROACH:  
Climb to 3000 direct  
JOGPU and hold.

ATIS <b>135.125</b>	SPRINGFIELD APP CON <b>124.95 290.5</b>	SPRINGFIELD TOWER <b>119.9 257.8</b>	GND CON <b>121.9 251.15</b>	CLNC DEL <b>123.675</b>
------------------------	--	---	--------------------------------	----------------------------



3000	JOGPU	VGSI and RNAV glidepath not coincident (VGSI Angle 3.00/TCH 35).	4 NM	Holding Pattern
*LNAV only.	APELL	2900	139°	3200
*1.4 NM to RW32	RW32	2900	319°	GP 3.00°
1.4 NM	3.6 NM	6 NM		TCH 51
CATEGORY	A	B	C	D
LPV	DA	1518-1	250 (300-1)	
LNAV/VNAV	DA	1660-1¼	392 (400-1¼)	
LNAV	MDA	1740-1	472 (500-1)	1740-1⅓ 472 (500-1⅓)
CIRCLING	1760-1	1820-1	1820-1½	1920-2
	492 (500-1)	552 (600-1)	552 (600-1½)	652 (700-2)

NC-3, 10 JUL 2025 to 07 AUG 2025

NC-3, 10 JUL 2025 to 07 AUG 2025