

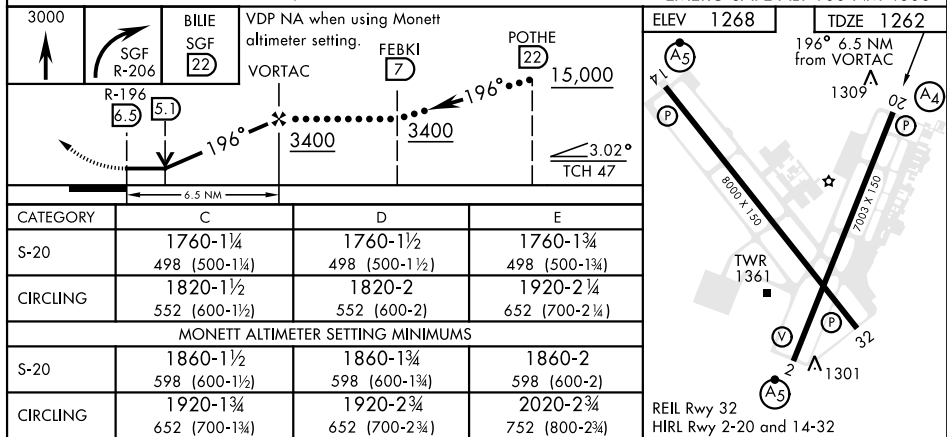
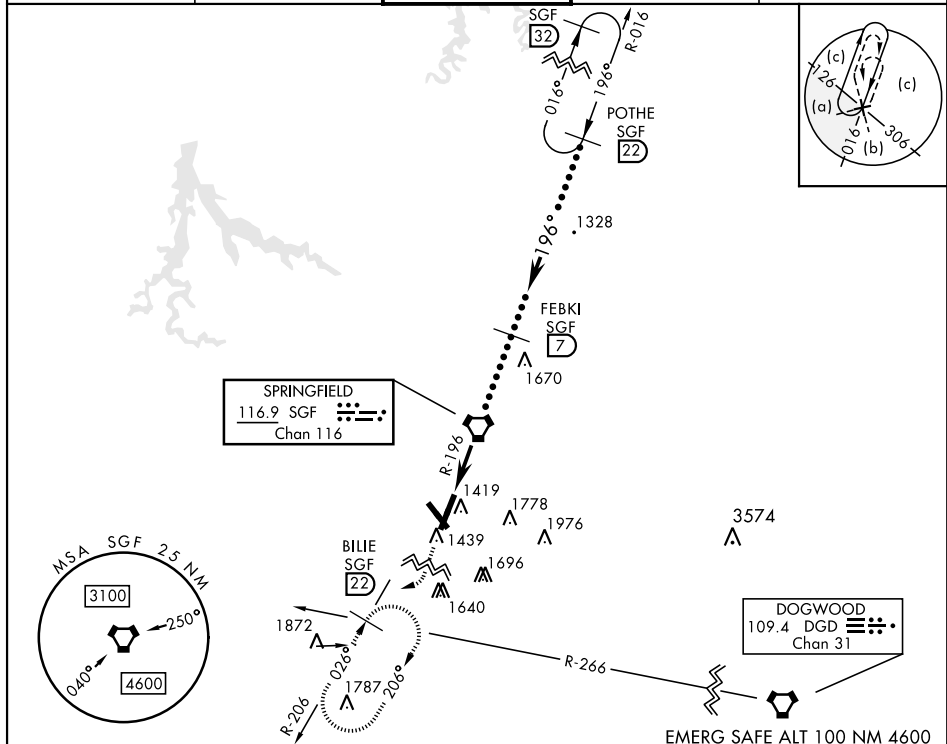
VORTAC SGF <u>116.9</u> Chgn 116	APCH CRS 196°	Rwy Idg 7003 TDZE 1262 Arpt Elev 1268
--	-------------------------	--

AL-604 [USAF]

SPRINGFIELD-BRANSON NATL (KSGF)

<p>▼ When local altimeter setting not received, use Monett altimeter setting.</p>	<p>MALS</p>	<p>MISSED APPROACH: Climb to 3000 then right turn via SGF VORTAC R-206 to BLUE INT/SGF 22 DME and hold.</p>
---	---	---

ATIS 135.125	APP CON 121.1 290.5	TOWER 119.9 257.8	GND CON 121.9 251.15	CLNC DEL 123.675
-----------------	------------------------	----------------------	-------------------------	---------------------



SPRINGFIELD, MISSOURI
Amdt 1

37°15'N-93°23'W

SPRINGFIELD-BRANSON NATL (KSGF)

HI-TACAN RWY 20

NC-3, 10 JUL 2025 to 07 AUG 2025