

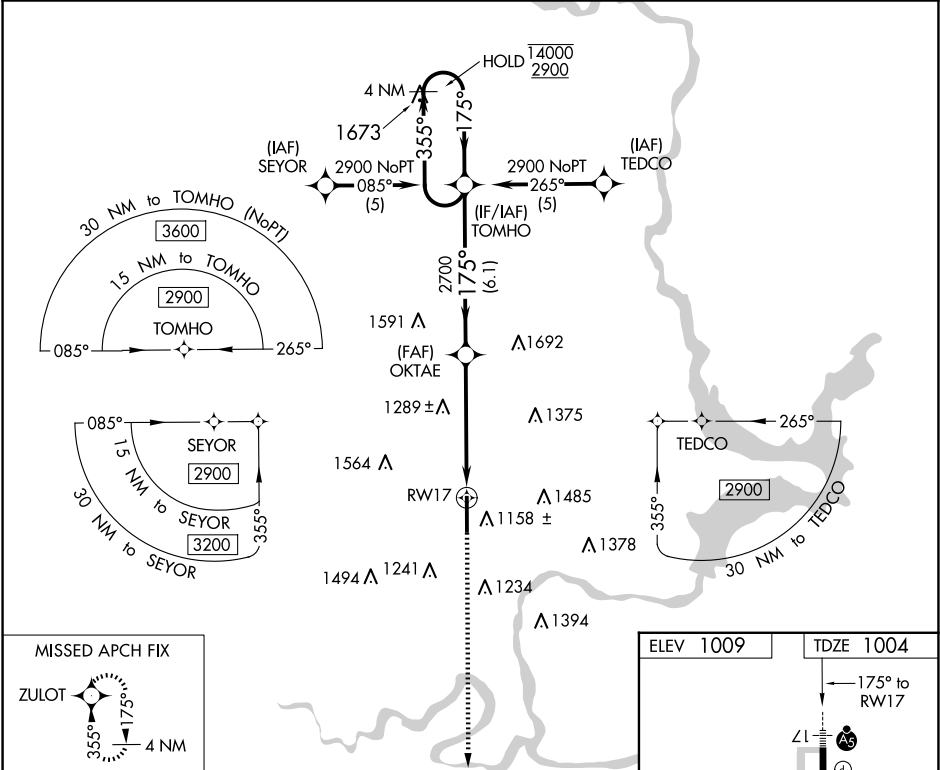
WAAS CH 50408 W17A	APP CRS 175°	Rwy Idg 7201 TDZE 1004 Apt Elev 1009
--	------------------------	---

RNAV (GPS) RWY 17

PONCA CITY RGNL (PNC)

RNP APCH - GPS.	MALSR	MISSED APPROACH: Climb to 2700 direct ZULOT and hold.
<div><div>▼</div><div>▲</div></div> <div>For uncompensated Baro-VNAV systems, LNAV/VNAV NA below -16°C or above 54°C. For inop ALS increase LPV visibility all Cats to ½ SM.</div>	<div><div>AS</div><div>⋮</div></div>	

ASOS 134.075	KANSAS CITY CENTER 127.8 319.1	UNICOM 123.0 (CTAF) 0
------------------------	--	---------------------------------



4 NM

Holding Pattern

TOMHO

OKTAE

2700

1.6 NM to RW17

RW17

2700

1.6 NM

2700

175°

175°

355°

175°

14000

2900

GP 3.00°

TCH 48

2700

6.1 NM

3.6 NM

1.6 NM

2700

175°

175°

355°

175°

2700

1.6 NM

2700

175°

175°

355°

175°

14000

2900

GP 3.00°

TCH 48

2700

6.1 NM

3.6 NM

1.6 NM

2700

1.6 NM

2700

175°

175°

355°

175°

2700

1.6 NM

2700

175°

175°

355°

175°

14000

2900

GP 3.00°

TCH 48

2700

6.1 NM

3.6 NM

1.6 NM

2700

1.6 NM

2700

175°

175°

355°

175°

2700

1.6 NM

2700

175°

175°

355°

175°

14000

2900

GP 3.00°

TCH 48

2700

6.1 NM

3.6 NM

1.6 NM

2700

1.6 NM

2700

175°

175°

355°

175°

2700

1.6 NM

2700

175°

175°

355°

175°

14000

2900

GP 3.00°

TCH 48

2700

6.1 NM

3.6 NM

1.6 NM

2700

1.6 NM

2700

175°

175°

355°

175°

2700

1.6 NM

2700

175°

175°

355°

175°

14000

2900

GP 3.00°

TCH 48

2700

6.1 NM

3.6 NM

1.6 NM

2700

1.6 NM

2700

175°

175°

355°

175°

2700

1.6 NM

2700

175°

175°

355°

175°

14000

2900

GP 3.00°

TCH 48

2700

6.1 NM

3.6 NM

1.6 NM

2700

1.6 NM

2700

175°

175°

355°

175°

2700

1.6 NM

2700

175°

175°

355°

175°

14000

2900

GP 3.00°

TCH 48

2700

6.1 NM

3.6 NM

1.6 NM

2700

1.6 NM

2700

175°

175°

355°

175°

2700

1.6 NM

2700

175°

175°

355°

175°

14000

2900

GP 3.00°

TCH 48

2700

6.1 NM

3.6 NM

1.6 NM

2700

1.6 NM

2700

175°

175°

355°

175°

2700

1.6 NM

2700

175°

175°

355°

175°

14000

2900

GP 3.00°

TCH 48

2700

6.1 NM

3.6 NM

1.6 NM

2700

1.6 NM

2700

175°

175°

355°

175°

2700

1.6 NM

2700

175°

175°

355°

175°

14000

2900

GP 3.00°

TCH 48

2700

6.1 NM

3.6 NM

1.6 NM

2700

1.6 NM

2700

175°

175°

355°

175°

2700

1.6 NM

2700

175°

175°

355°

175°

14000

2900

GP 3.00°

TCH 48

2700

6.1 NM

3.6 NM

1.6 NM

2700

1.6 NM

2700

175°

175°

355°

175°

2700

1.6 NM

2700

175°

175°

355°

175°

14000

2900

GP 3.00°

TCH 48

2700

6.1 NM

3.6 NM

1.6 NM

2700

1.6 NM

2700

175°

175°

355°

175°

2700

1.6 NM

2700

175°

175°

355°

175°

14000

2900

GP 3.00°

TCH 48

2700

6.1 NM

3.6 NM

1.6 NM

2700

1.6 NM

2700

175°

175°

355°

175°

2700

1.6 NM

2700

175°

175°

355°

175°

14000

2900

GP 3.00°

TCH 48

2700

6.1 NM

3.6 NM

1.6 NM

2700

1.6 NM

2700

175°

175°

355°

175°

2700

1.6 NM

2700

175°

175°

355°

175°

14000

2900

GP 3.00°

TCH 48

2700

6.1 NM

3.6 NM

1.6 NM

2700

1.6 NM

2700

175°

175°

355°

175°

2700

1.6 NM

2700

175°

175°

355°

175°

14000

2900

GP 3.00°

TCH 48

2700

6.1 NM

3.6 NM

1.6 NM

2700

1.6 NM

2700

175°

175°

355°

175°

2700

1.6 NM

2700

175°

175°

355°

175°

14000

2900

GP 3.00°

TCH 48

2700

6.1 NM

3.6 NM

1.6 NM

2700

1.6 NM

2700

175°

175°

355°

175°

2700

1.6 NM

2700

175°

175°

355°

175°

14000

2900

GP 3.00°

TCH 48

2700

6.1 NM

3.6 NM

1.6 NM

2700

1.6 NM

2700

175°

175°

355°

175°

2700

1.6 NM

2700

175°

175°

355°

175°

14000

2900

GP 3.00°

TCH 48

2700

6.1 NM

3.6 NM

1.6 NM

2700

1.6 NM

2700

175°

175°

355°

175°

2700

1.6 NM

2700

175°

175°

355°

175°

14000

2900

GP 3.00°

TCH 48

2700

6.1 NM

3.6 NM

1.6 NM

2700

1.6 NM

2700

175°

175°

355°

175°

2700

1.6 NM

2700

175°

175°

355°

175°

14000

2900

GP 3.00°

TCH 48

2700

6.1 NM

3.6 NM

1.6 NM

2700

1.6 NM

2700

175°

175°

355°

175°

2700

1.6 NM

2700

175°

175°

355°

175°

14000

2900

GP 3.00°

TCH 48

2700

6.1 NM

3.6 NM

1.6 NM

2700

1.6 NM

2700

175°

175°

355°

175°

2700

1.6 NM

2700

175°

175°

355°

175°

14000

2900

GP 3.00°

TCH 48

2700

6.1 NM

3.6 NM

1.6 NM

2700

1.6 NM

2700

175°

175°

355°

175°

2700

1.6 NM

2700

175°

175°

355°

175°

14000

2900

GP 3.00°

TCH 48

2700

6.1 NM

3.6 NM

1.6 NM

2700

1.6 NM

2700

175°

175°

355°

175°

2700

1.6 NM

2700

175°

175°

355°

175°

14000

2900

GP 3.00°

TCH 48

2700

6.1 NM

3.6 NM

1.6 NM

2700

1.6 NM

2700

175°

175°

355°

175°

2700

1.6 NM

2700

175°

175°

355°

175°

14000

2900

GP 3.00°

TCH 48

2700

6.1 NM

3.6 NM

1.6 NM

2700

1.6 NM

2700

175°

175°

355°

175°

2700

1.6 NM

2700

175°

175°

355°

175°

14000

2900

GP 3.00°

TCH 48

2700

6.1 NM

3.6 NM

1.6 NM

2700

1.6 NM

2700

175°

175°

355°

175°

2700

1.6 NM

2700

175°

175°

355°

175°

14000

2900

GP 3.00°

TCH 48

2700

6.1 NM

3.6 NM

1.6 NM

2700

1.6 NM

2700

175°

175°

355°

175°

2700

1.6 NM

2700

175°

175°

355°

175°

14000

2900

GP 3.00°

TCH 48

2700

6.1 NM

3.6 NM

1.6 NM

2700

1.6 NM

2700

175°

175°

355°

175°

2700

1.6 NM

2700

175°

175°

355°

175°

14000

2900

GP 3.00°

TCH 48

2700

6.1 NM

3.6 NM

1.6 NM

2700

1.6 NM

2700

175°

175°

355°

175°

2700

1.6 NM

2700

175°

175°

355°

175°

14000

2900

GP 3.00°

TCH 48

2700

6.1 NM

3.6 NM

1.6 NM

2700

1.6 NM

2700

175°

175°

355°

175°

2700

1.6 NM

2700

175°

175°

355°

175°

14000

2900

GP 3.00°

TCH 48

2700

6.1 NM

3.6 NM

1.6 NM

2700

1.6 NM

2700

175°

175°

355°

175°

2700

1.6 NM

2700

175°

175°

355°

175°

14000

2900

GP 3.00°

TCH 48

2700

6.1 NM

3.6 NM

1.6 NM

2700

1.6 NM

2700

175°

175°

355°

175°

2700

1.6 NM

2700

175°

175°

355°

175°

14000

2900

GP 3.00°

TCH 48

2700

6.1 NM

3.6 NM

1.6 NM

2700

1.6 NM

2700

175°

175°

355°

175°

2700

1.6 NM

2700

175°

175°

355°

175°

14000

2900

GP 3.00°

TCH 48

2700

6.1 NM

3.6 NM

1.6 NM

2700

1.6 NM

2700

175°

175°

355°

175°

2700

1.6 NM

2700

175°

175°

355°

175°

14000

2900

GP 3.00°

TCH 48

2700

6.1 NM

3.6 NM

1.6 NM

2700

1.6 NM

2700

175°

175°

355°

175°

2700

1.6 NM

2700

175°

175°

355°

175°

14000

2900

GP 3.00°

TCH 48

2700

6.1 NM

3.6 NM

1.6 NM

2700

1.6 NM

2700

175°

175°

355°

175°

2700

1.6 NM

2700

175°

175°

355°

175°

14000

2900

GP 3.00°

TCH 48

2700

6.1 NM

3.6 NM

1.6 NM

2700

1.6 NM

2700

175°

175°

355°

175°

2700

1.6 NM

2700

175°

175°

355°

175°

14000

2900

GP 3.00°

TCH 48

2700

6.1 NM

3.6 NM

1.6 NM

2700

1.6 NM

2700

175°

175°

355°

175°

2700

1.6 NM

2700

175°

175°

355°

175°

14000

2900

GP 3.00°

TCH 48

2700

6.1 NM

3.6 NM

1.6 NM

2700

1.6 NM

2700

175°

175°

355°

175°

2700

1.6 NM

2700

175°

175°

355°

175°

14000

2900

GP 3.00°

TCH 48

2700

6.1 NM

3.6 NM

1.6 NM

2700

1.6 NM

2700

175°

175°

355°

175°

2700

1.6 NM

2700

175°

175°

355°

175°

14000

2900

GP 3.00°

TCH 48

2700

6.1 NM

3.6 NM

1.6 NM

2700

1.6 NM

2700

175°

175°

355°

175°

2700

1.6 NM

2700

175°

175°

355°

175°

14000

2900

GP 3.00°

TCH 48

2700

6.1 NM

3.6 NM

1.6 NM

2700

1.6 NM

2700

175°

175°

355°

175°

2700

1.6 NM

2700

175°

175°

355°

175°

14000

2900

GP 3.00°

TCH 48

2700

6.1 NM

3.6 NM

1.6 NM

2700

1.6 NM

2700

175°

175°

355°

175°

2700

1.6 NM

2700

175°

175°

355°

175°

14000

2900

GP 3.00°

TCH 48

2700

6.1 NM

3.6 NM

1.6 NM

2700

1.6 NM

2700

175°

175°

355°

175°

2700

1.6 NM

2700

175°

175°

355°

175°

