

LOC/DME I-PNC
111.9
Chan **56**

APP CRS
175°

Rwy Idg **7201**
TDZE **1004**
Apt Elev **1009**

ILS or LOC RWY 17
PONCA CITY RGNL (PNC)

DME required.

▼

▲ NA

For inop ALS, increase S-LOC 17 visibility Cat C/D to 1 ½ SM.

MALSR

AS

AS

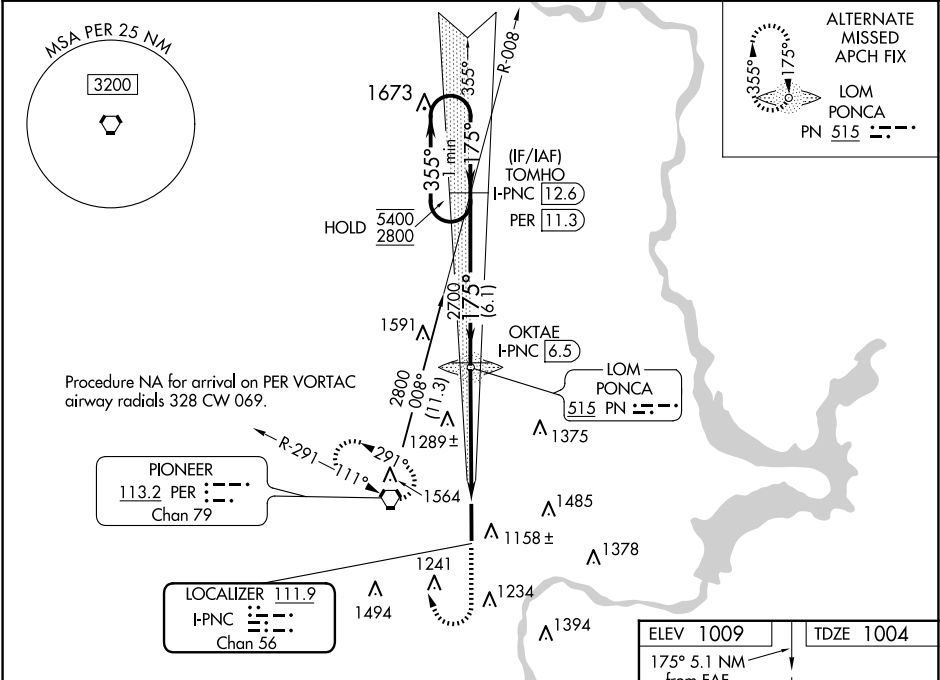
ILS

MISSED APPROACH: Climb to 2700 then right turn direct PER VORTAC and hold.

ASOS
134.075

KANSAS CITY CENTER
127.8 319.1

UNICOM
123.0 (CTAF) 0



VGSI and ILS glidepath not coincident (VGSI Angle 3.00/TCH 52).

One Minute Holding Pattern

5400 355° 2800 175°

2700 175°

2700 2.9 I-PNC 1.4 I-PNC

6.1 NM 3.6 NM 1.5 NM

2700 PER

1050 7201 X 100 35

CATEGORY	A	B	C	D
S-ILS 17	1204-½ 200 (200-½)			
S-LOC 17	1520-½ 516 (600-½)		1520-1 516 (600-1)	
CIRCLING	1520-1 511 (600-1)	1580-1 571 (600-1)	1800-2¼ 791 (800-2¼)	1880-2¾ 871 (900-2¾)

HIRL Rwy 17-35 0

SC-1, 10 JUL 2025 to 07 AUG 2025

SC-1, 10 JUL 2025 to 07 AUG 2025