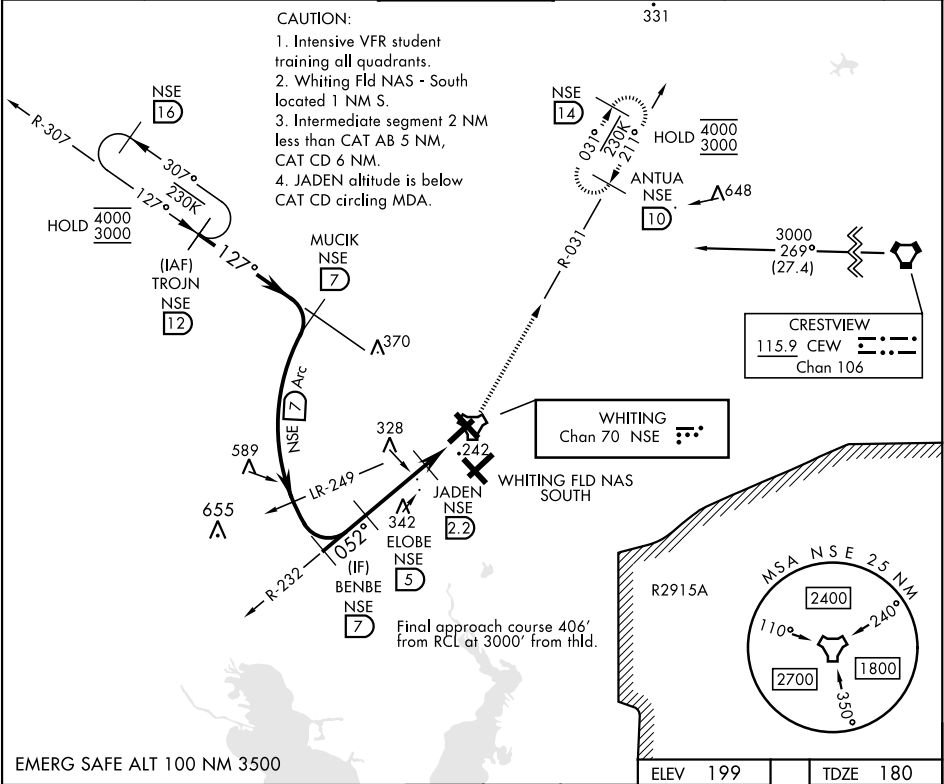


TACAN RWY 5

TACAN NSE Chan 70	APCH CRS 052°	Rwy Idg 6003 TDZE 180 Arpt Elev 199	[USN]	WHITING FLD NAS - NORTH (KNSE)		
* Circling not authorized S of Rws 5 and 32.			MISSED APPROACH: Climb to 3000 via R-232 to NSE TACAN. Then via NSE TACAN R-031 to ANTUA and hold. Continue climb in hold. Contact Pensacola APP CON.			
ATIS ★ 290.325	PENSACOLA APP CON 127.35 278.8		NORTH WHITING TOWER ★ 121.4 306.925	GND CON 251.15	CLNC DEL 257.775	ASR



EMERG SAFE ALT 100 NM 3500					ELEV 199	TDZE 180
CATEGORY	A	B	C	D		
S-5		500-1	320 (400-1)			
CIRCLING*	560-1 361 (400-1)	660-1 461 (500-1)	660-1½ 461 (500-1½)	760-2 561 (600-2)		

TACAN RWY 5

SE-3, 10 JUL 2025 to 07 AUG 2025

SE-3, 10 JUL 2025 to 07 AUG 2025