

MILTON, FLORIDA

23362

RNAV (GPS) RWY 23

APCH CRS	Rwy Idg
229°	6003
TDZE	183
Arpt Elev	199

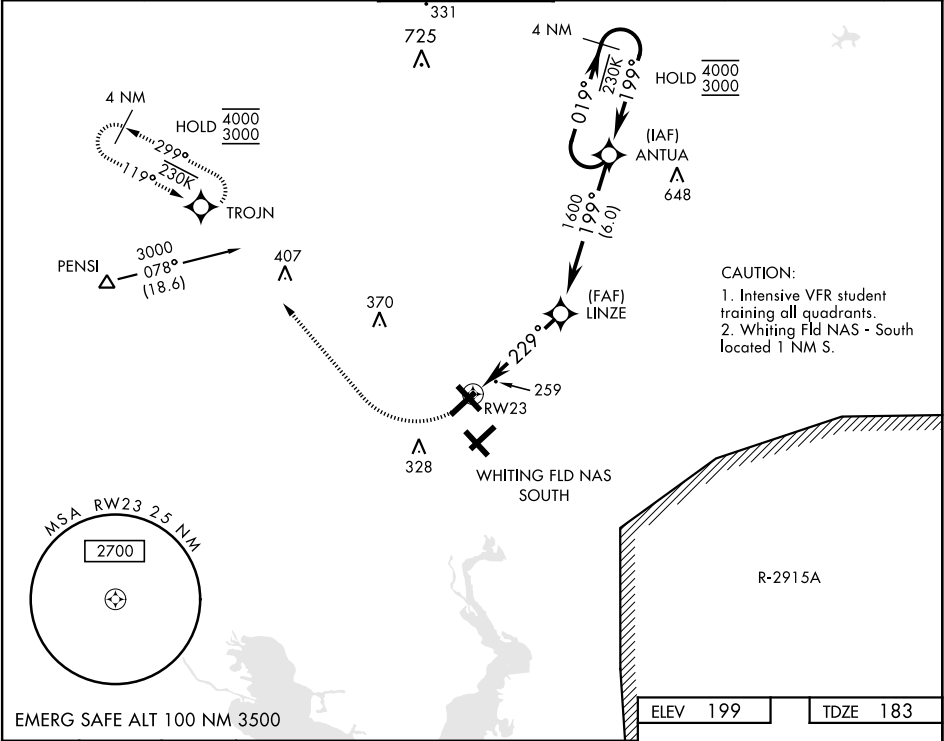
[USN]

WHITING FLD NAS - NORTH (KNSE)

RNP APCH
* Circling not authorized S of Rwy 5 and 32.

MISSED APPROACH: Climb to 700, then climbing right turn to 3000 direct TROJN and hold. Continue climb in hold. Contact Pensacola APP CON.

ATIS ★ 290.325	PENSACOLA APP CON 127.35 278.8	NORTH WHITING TOWER ★ 121.4 306.925	GND CON 251.15	CLNC DEL 257.775	ASR
-------------------	-----------------------------------	--	-------------------	---------------------	-----



700

↑

3000

↷

TROJN

⬤

0.9 NM to RW23

↘

229°

3.04°

TCH 52

4.2 NM

LINZE

1600

199°

ANTUA

019°

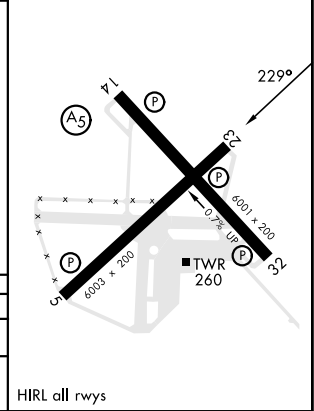
4000

3000

199°

4 NM Holding Pattern

CATEGORY	A	B	C	D
LNVA MDA	520-1 337 (400-1)			
CIRCLING*	560-1 361 (400-1)	660-1 461 (500-1)	660-1½ 461 (500-1½)	760-2 561 (600-2)



MILTON, FLORIDA

30°43'N-87°01'W

WHITING FLD NAS - NORTH (KNSE)

Amdt 4 28DEC23

RNAV (GPS) RWY 23

SE-3, 10 JUL 2025 to 07 AUG 2025

SE-3, 10 JUL 2025 to 07 AUG 2025