

MILTON, FLORIDA

LOC/DME I-NSE 111.75 Chan 54(Y)	APCH CRS 139°	Rwy Idg TDZE Arpt Elev 6001 199 199
---	-------------------------	---

[USN]

WHITING FLD NAS - NORTH (KNSE)

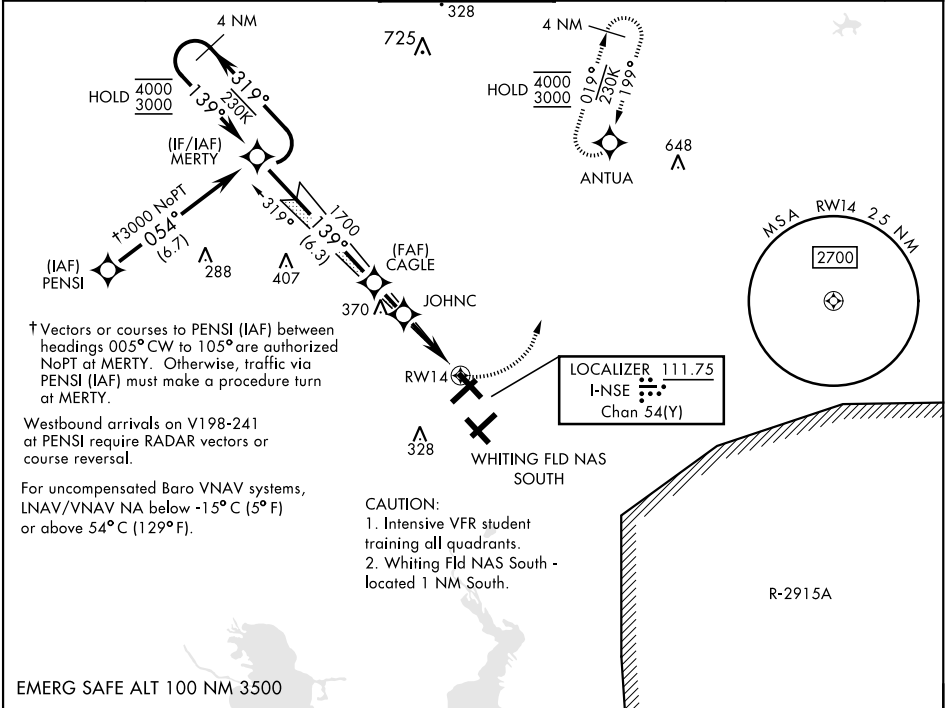
RNAV1-GPS for ILS.
RNP APCH for LNAV/VNAV, LNAV.

- ▼
- * When ALS inop, increase vis to ¾ mile.
 - ** When ALS inop, increase vis to 1 mile.
 - *** Circling not authorized S of Rwy 5 and 32.

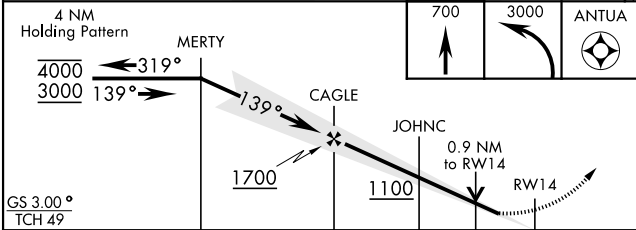


MISSED APPROACH: Climb to 700, then climbing left turn to 3000 direct to ANTUA and hold. Continue climb in hold. Contact Pensacola APP CON.

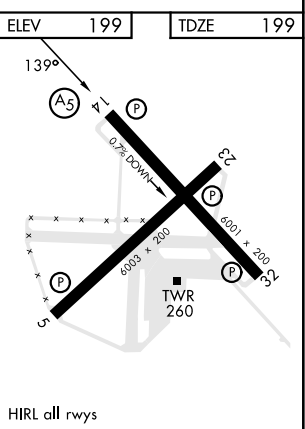
ATIS ★ 290.325	PENSACOLA APP CON 127.35 278.8	NORTH WHITING TOWER ★ 121.4 306.925	GND CON 251.15	CLNC DEL 257.775	ASR
--------------------------	--	--	--------------------------	----------------------------	-----



EMERG SAFE ALT 100 NM 3500



CATEGORY	A	B	C	D
S-ILS 14 *	399-½	200	(200-½)	
LNAV/VNAV DA *	449-½	250	(300-½)	
LNAV MDA **	520-½	321	(400-½)	
CIRCLING ***	560-1 361 (400-1)	660-1 461 (500-1)	660-1½ 461 (500-1½)	760-2 561 (600-2)



MILTON, FLORIDA

30°43'N-87°01'W

WHITING FLD NAS - NORTH (KNSE)

Amtd 6 18APR24

ILS Z or RNAV (GPS) RWY 14

SE-3, 10 JUL 2025 to 07 AUG 2025

SE-3, 10 JUL 2025 to 07 AUG 2025