


MILTON, FLORIDA

24109

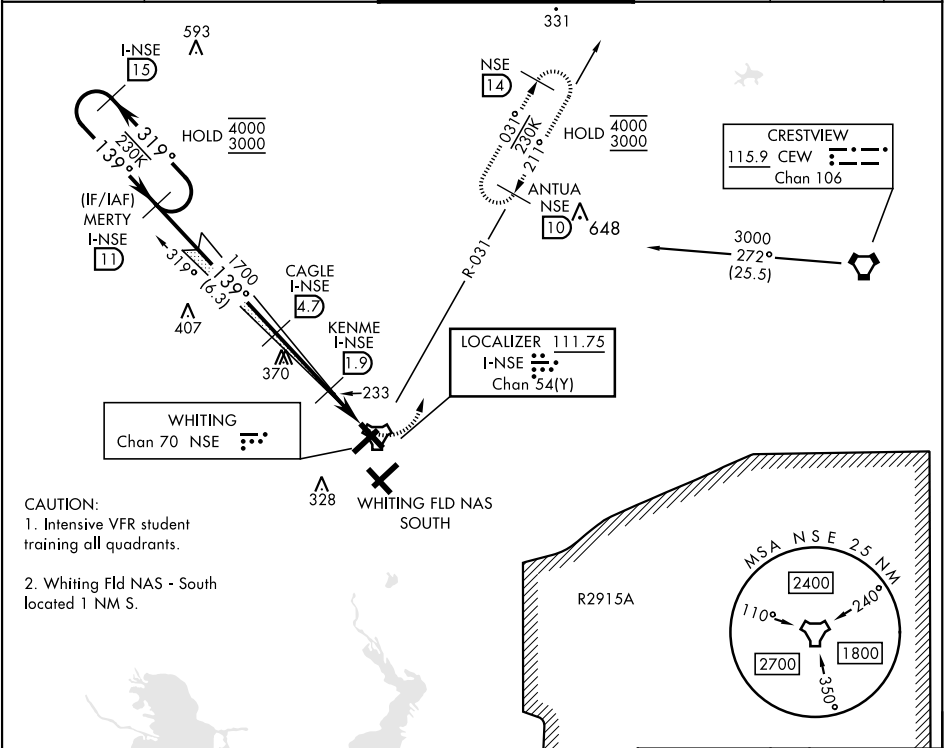
LOC/DME I-NSE 111.75 Chan 54(Y)	APCH CRS 139°	Rwy Idg TDZE Arpt Elev 6001 199 199
---	-------------------------	---

[USN]

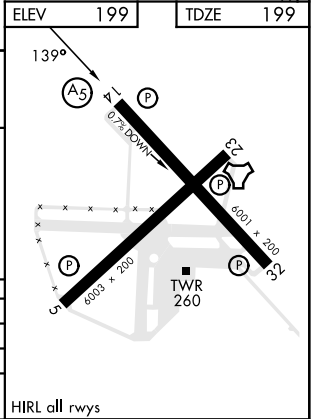
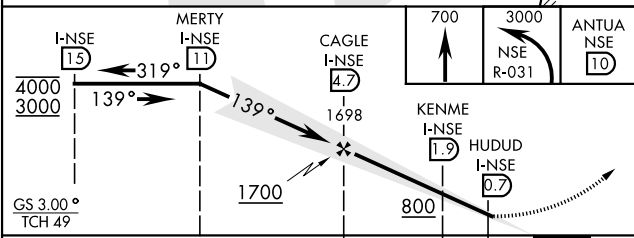
WHITING FLD NAS - NORTH (KNSE)

TACAN and DME required.	MALSR 	MISSED APPROACH: Climb to 700. Then climbing left turn to 3000. Intercept NSE TACAN R-031 to ANTUA and hold. Continue climb in hold. Contact Pensacola APP CON.
-------------------------	--	---

ATIS ★ 290.325	PENSACOLA APP CON 127.35 278.8	NORTH WHITING TOWER ★ 121.4 306.925	GND CON 251.15	CLNC DEL 257.775	ASR
--------------------------	--	---	--------------------------	----------------------------	-----



EMERG SAFE ALT 100 NM 3500



CATEGORY	A	B	C	D
S-ILS 14 *	399-½	200	(200-½)	
S-LOC 14 **	500-½	301	(400-½)	
*** CIRCLING	560-1 361 (400-1)	660-1 461 (500-1)	660-1½ 461 (500-1½)	760-2 561 (600-2)

MILTON, FLORIDA

30° 43' N-87° 01' W

WHITING FLD NAS - NORTH (KNSE)

Amtd 6 18APR24

ILS Y or LOC Y RWY 14

SE-3, 10 JUL 2025 to 07 AUG 2025

SE-3, 10 JUL 2025 to 07 AUG 2025