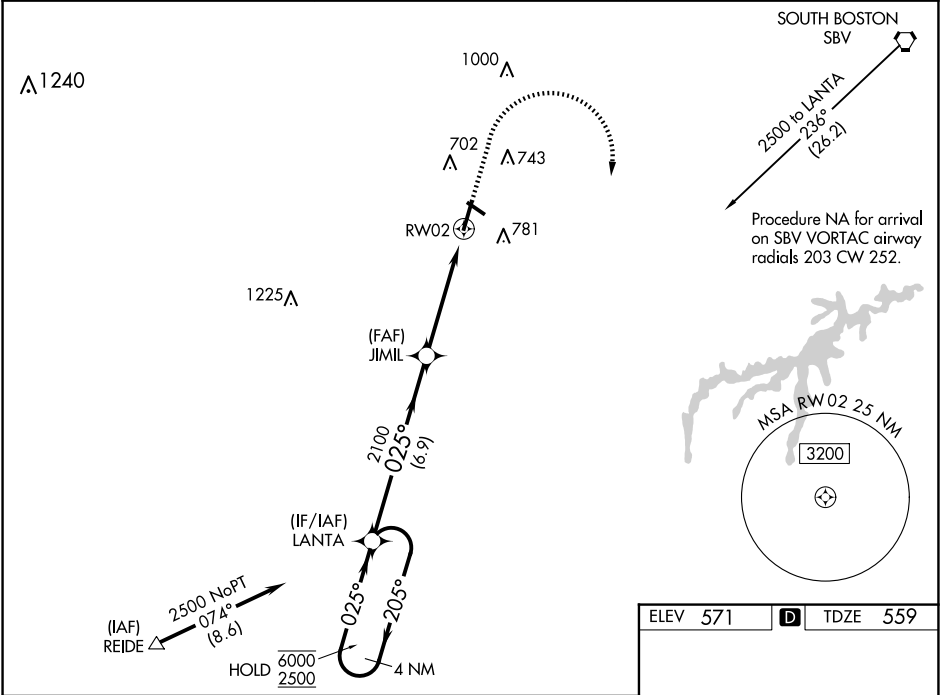


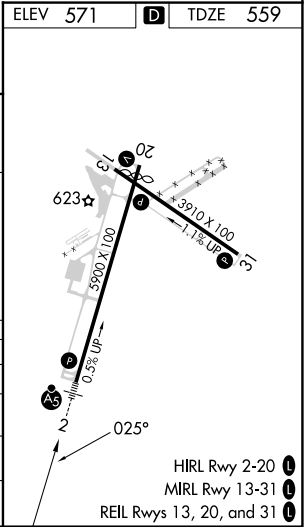
WAAS CH <b>42916</b> <b>W02A</b>	APP CRS <b>025°</b>	Rwy ldg TDZE <b>5600</b> 559 Apt Elev <b>571</b>
--	------------------------	---

RNAV (GPS) RWY 2  
DANVILLE RGNL (DAN)

RNP APCH.		MALSR	MISSED APPROACH: Climb to 1000 then climbing right turn to 2500 direct LANTA and hold.
▼ ▲ For uncompensated Baro-VNAV systems, LNAV/VNAV NA below -14°C or above 54°C. For inop ALS increase LNAV/VNAV all Cats visibility to 1 SM. Increase LNAV Cats C/D visibility to 1½ SM.		▲	
ASOS <b>128.125</b>	WASHINGTON CENTER <b>124.05 352.0</b>	UNICOM <b>123.05 (CTAF) 0</b>	



4 NM Holding Pattern		1000	2500	LANTA
LANTA		* LNAV only.		
6000 ← 205°		* 1.4 NM to RW02		
2500 → 025°		RW02		
GP 3.00°		JIMIL 2100		
TCH 54		2100		
		6.9 NM		
		3.3 NM		
		1.4		
CATEGORY	A	B	C	D
LPV DA	759-½		200 (200-½)	
LNAV/VNAV DA	924-⅝		365 (400-⅝)	
LNAV MDA	1040-½ 481 (500-½)		1040-1 481 (500-1)	
CIRCLING	1120-1 549 (600-1)		1120-1½ 549 (600-1½)	
			1200-2 629 (700-2)	



NE-3, 10 JUL 2025 to 07 AUG 2025

NE-3, 10 JUL 2025 to 07 AUG 2025