

LOC I-DAN <b>110.7</b>	APP CRS <b>025°</b>	Rwy Idg TDZE Apt Elev <b>5600</b> <b>559</b> <b>571</b>
---------------------------	------------------------	--

ILS or LOC RWY 2  
DANVILLE RGNL (DAN)

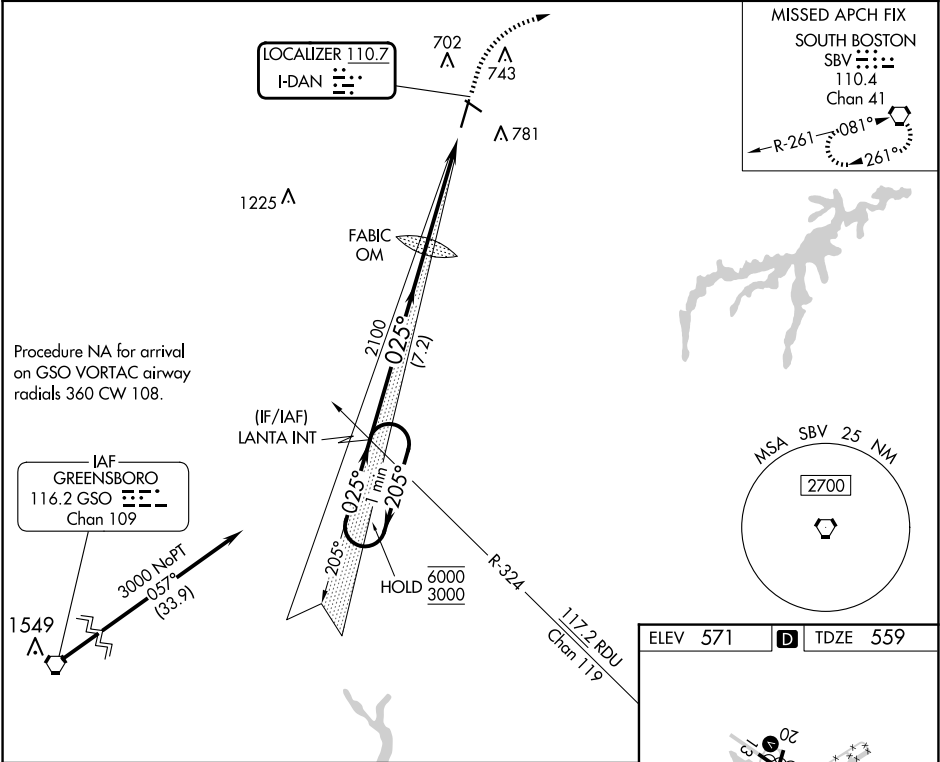
**⚠**

**⚠** For inop ALS, increase S-LOC 2 Cat C/D visibility to 1½ SM.

MALSR

MISSED APPROACH: Climb to 2000 then climbing right turn to 3000 direct SBV VORTAC and hold.

ASOS <b>128.125</b>	WASHINGTON CENTER <b>124.05 352.0</b>	UNICOM <b>123.05 (CTAF) 1</b>
------------------------	--	----------------------------------



One Minute Holding Pattern		LANTA INT	FABIC OM	2000	3000	SBV
6000 ← 205°		2025° →	2025°	2019		
GS 3.00°		TCH 54	2100			
		7.2 NM	4.5 NM			
CATEGORY	A	B	C	D		
S-ILS 2	759-½		200 (200-½)			
S-LOC 2	1020-½	461 (500-½)	1020-1	461 (500-1)		
CIRCLING	1120-1	549 (600-1)	1120-1½	1200-2		
			549 (600-1½)	629 (700-2)		

FAF to MAP 4.5 NM

Knots	60	90	120	150	180
Min:Sec	4:30	3:00	2:15	1:48	1:30