

VORTAC PIA	APP CRS	Rwy Idg	10104
115.2	281°	TDZE	650
Chan 99		Apt Elev	661

VOR Z or TACAN Z RWY 31

GENERAL DOWNING - PEORIA INTL(PIA)

DME required.

▼

Rwy 31 helicopter visibility reduction below RVR 5000 NA.

▲

Inop table does not apply. Straight-in and Circling Rwy 31 NA at night. Circling Rwy 13 NA at night. When local altimeter setting not received, use AAA altimeter setting; increase all MDAs 100 feet and Circling visibility Cat C/D ½ SM.

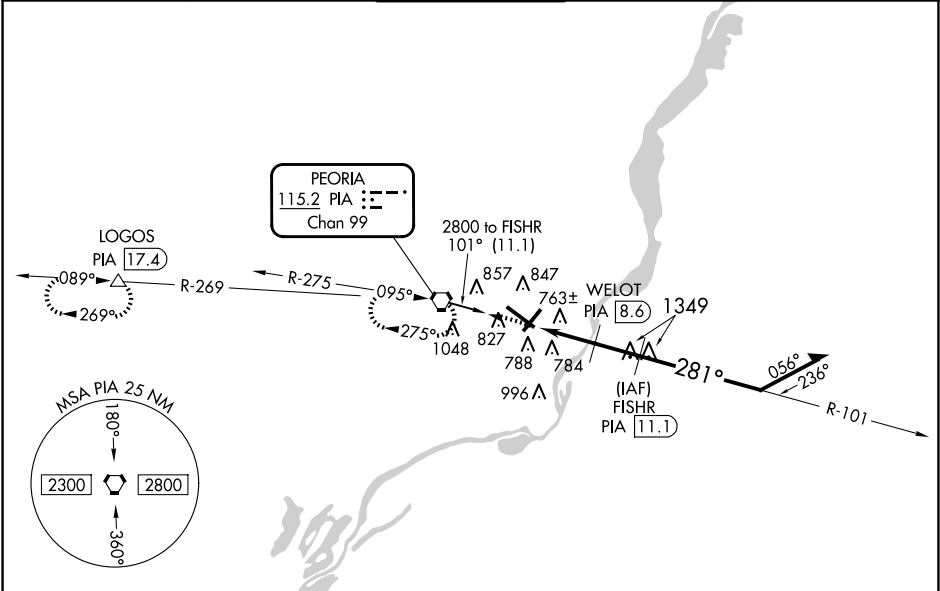
MALS R

AS

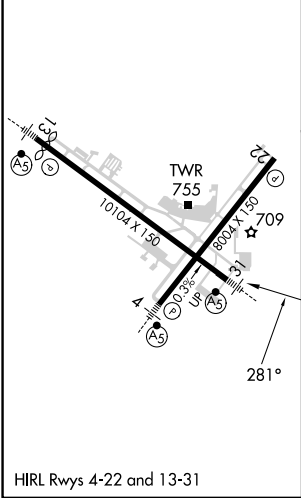
↓

MISSED APPROACH: Climb to 2800 direct PIA VORTAC and hold, continue climb-in-hold to 2800. (TACAN aircraft continue on PIA VORTAC R-269 to LOGOS/PIA 17.4 DME and hold west, right turn, 089° inbound).

ATIS 126.1 282.2	SAINT LOUIS APP CON 125.8 269.2	PEORIA TOWER 124.0 353.85	GND CON 121.85 348.6	CLNC DEL 124.675 317.55
---------------------	------------------------------------	------------------------------	-------------------------	----------------------------



ELEV 661	D	TDZE 650
----------	---	----------



2800	PIA	FISHR	PIA	107°	2800
↑	⬡	PIA	11.1	281°	2600
WELOT	PIA	8.6	1800	3.00°	TCH 55
PIA	5.1	3.5 NM	2.5 NM		
CATEGORY	A	B	C	D	
S-31	1040/55	390 (400-1)	1040/60	390 (400-1¼)	
CIRCLING	1160-1	499 (500-1)	1180-1½	1400-2¼	
			519 (600-1½)	739 (800-2¼)	