

WAAS CH 56210 W04A	APP CRS 041°	Rwy Idg TDZE Apt Elev	7826 652 661
--	------------------------	-----------------------------	---

RNAV (GPS) RWY 4
GENERAL DOWNING - PEORIA INTL (PIA)

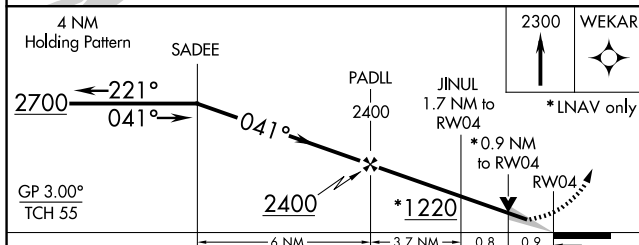
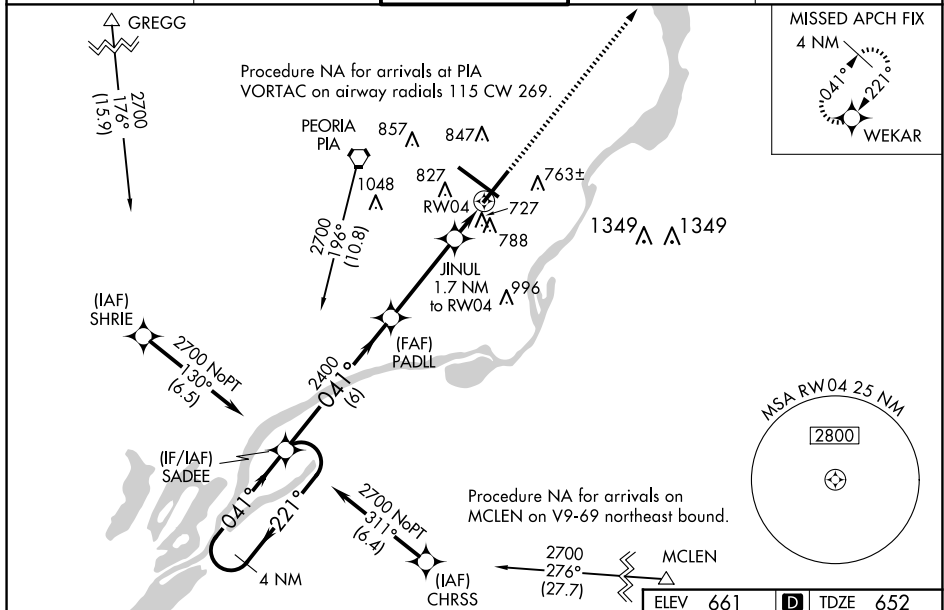
RNP APCH.

▼ For uncompensated Baro-VNAV systems, LNAV/VNAV NA below -1°C or above 54°C. **▲** VDP and Baro-VNAV NA with Logan County altimeter setting. When local altimeter setting not received, use Logan County altimeter setting and increase all DA 89 feet and all MDA 100 feet, increase LNAV/VNAV all Cats visibility ½ mile, LNAV Cat C and D visibility ¼ mile, and Circling Cat C ¼ mile and Cat D ½ mile. For inoperative MALSR using Logan County altimeter setting, increase LPV all Cats visibility to 1 mile. For inop ALS, increase LNAV Cat C/D visibility to 1 SM. Circling Rwy 13, 31 NA at night.

MALSR

MISSED APPROACH:
Climb to 2300 direct
WEKAR and hold.

ATIS	SAINT LOUIS APP CON	PEORIA TOWER	GND CON	CLNC DEL
126.1 282.2	125.8 269.2	124.0 353.85	121.85 348.6	124.675 317.55



CATEGORY	A	B	C	D
LPV DA	857-½ 205 (200-½)			
LNAV/VNAV DA	905-½ 253 (300-½)			
LNAV MDA	1000-½	348 (400-½)	1000-⅝	348 (400-⅝)
C CIRCLING	1160-1	499 (500-1)	1180-1½ 519 (600-1½)	1400-2¼ 739 (800-2¼)

