

APP CRS
221°

Rwy Idg
8004

TDZE
661

Apt Elev
661

RNAV (GPS) RWY 22

GENERAL DOWNING - PEORIA INTL (PIA)

RNP APCH

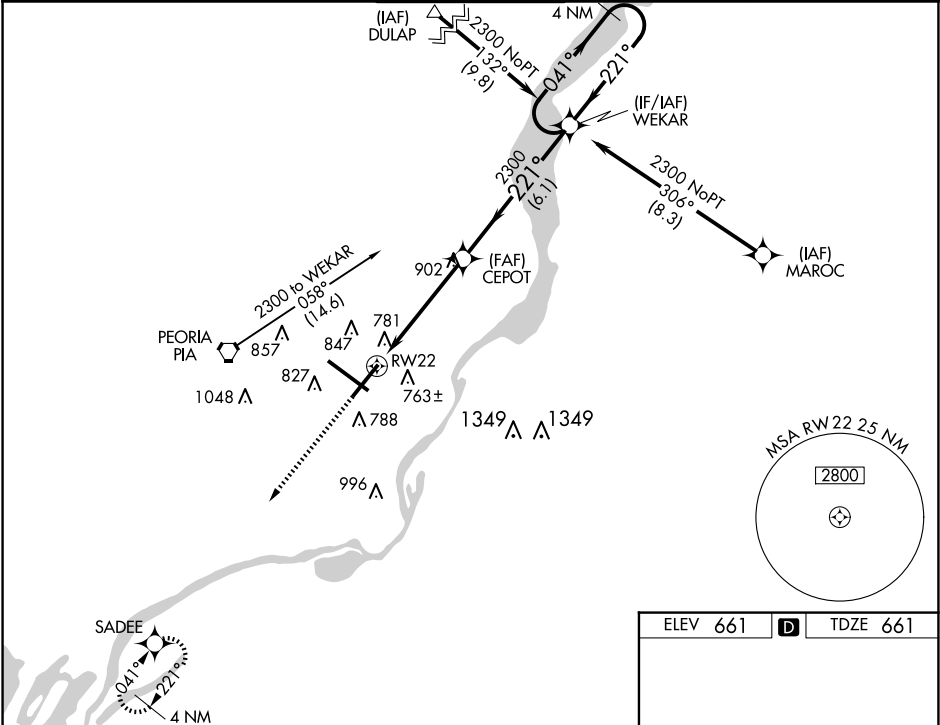
▼

▲

For uncompensated Baro-VNAV systems, LNAV/VNAV NA below -19°C or above 54°C.
When local altimeter setting not received, use Logan County altimeter setting and increase all DA 89 feet and all MDA 100 feet, increase LNAV/VNAV DA all Cats visibility to 1½ mile, LNAV MDA Cat C and D visibility to 1¾ mile, and Circling Cat C ¾ mile and Cat D ½ mile.
Baro-VNAV and VDP NA when using Logan County altimeter setting. Rwy 22 helicopter visibility reduction below ¾ SM NA. Circling Rwy 13, 31 NA at night.

MISSED APPROACH:
Climb to 2700 direct
SADEE and hold.

ATIS	SAINT LOUIS APP CON	PEORIA TOWER	GND CON	CLNC DEL
126.1 282.2	125.8 269.2	124.0 353.85	121.85 348.6	124.675 317.55



2700

SADEE

VGSI and RNAV glidepath not coincident
(VGSI Angle 3.00/TCH 45).

4 NM Holding Pattern

*LNAV only

*1.4 NM to RW22

CEPOT

WEKAR

2300

221°

041°

2300

GP 3.00° TCH 55

1.4

3.5 NM

6.1 NM

CATEGORY	A	B	C	D
LNAV/VNAV DA	1093-13 ⁵ / ₈ 432 (500-1 ³ / ₈)			
LNAV MDA	1160-1 499 (500-1)		1160-1 ³ / ₈ 499 (500-1 ³ / ₈)	
CIRCLING	1160-1 499 (500-1)		1180-1 ¹ / ₂ 519 (600-1 ¹ / ₂) 1400-2 ¹ / ₄ 739 (800-2 ¹ / ₄)	

