

LOM PI

356

APP CRS

309°

Rwy Idg

10104

TDZE

650

Apt Elev

661

NDB RWY 31

GENERAL DOWNING - PEORIA INTL (PIA)

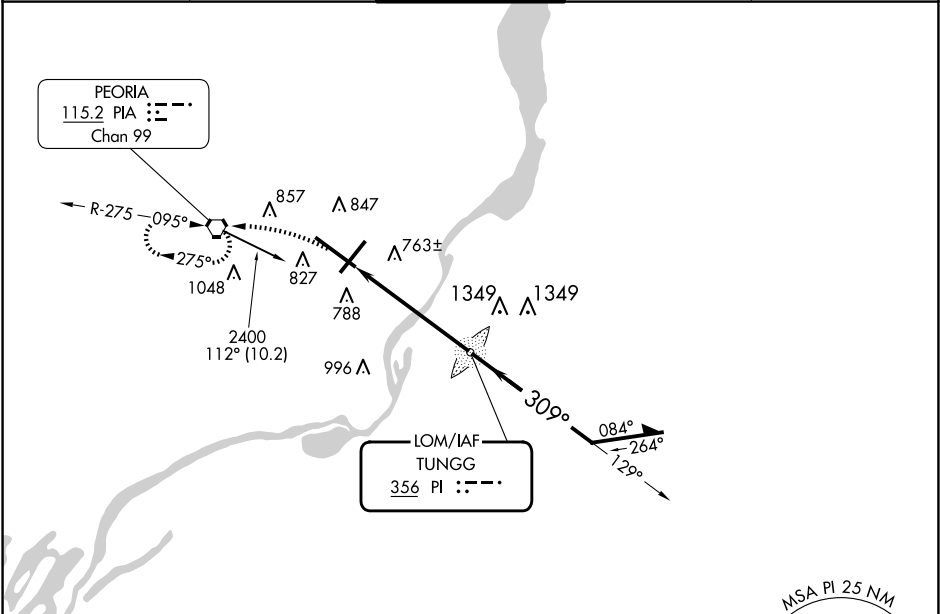
⚠

For inop ALS, increase S-31 Cat A/B visibility to RVR 5500, and Cat C/D to 1 3⁄8 SM. When local altimeter setting not received, use Logan County altimeter setting and increase all MDA 100 feet, increase S-31 Cat C and D visibility 1⁄4 mile, and Circling Cat C 1⁄4 mile and Cat D 1⁄2 mile. Circling Rwy 13, 31 NA at night.

MALSR

MISSED APPROACH: Climbing left turn 2400 direct PIA VORTAC and hold.

ATIS	SAINT LOUIS APP CON	PEORIA TOWER	GND CON	CLNC DEL
126.1 282.2	125.8 269.2	124.0 353.85	121.85 348.6	124.675 317.55



ELEV 661

D

TDZE 650

2400

PIA

PI LOM

2400

309°

2400

129°

Remain within 10 NM

≤ 3.09°

TCH 50

5.2 NM

CATEGORY	A	B	C	D
S-31	1140/40 490 (500-3⁄4)		1140/50 490 (500-1)	
CIRCLING	1160-1 499 (500-1)		1180-1 1⁄2 519 (600-1 1⁄2)	1400-2 1⁄4 739 (800-2 1⁄4)

HIRL Rwy 4-22 and 13-31

FAF to MAP 5.2 NM

Knots	60	90	120	150	180
Min:Sec	5:12	3:28	2:36	2:05	1:44