

LOC I-PIA

109.9

APP CRS

309°

Rwy Ldg

10104

TDZE

650

Apt Elev

661

ILS or LOC RWY 31

GENERAL DOWNING - PEORIA INTL (PIA)

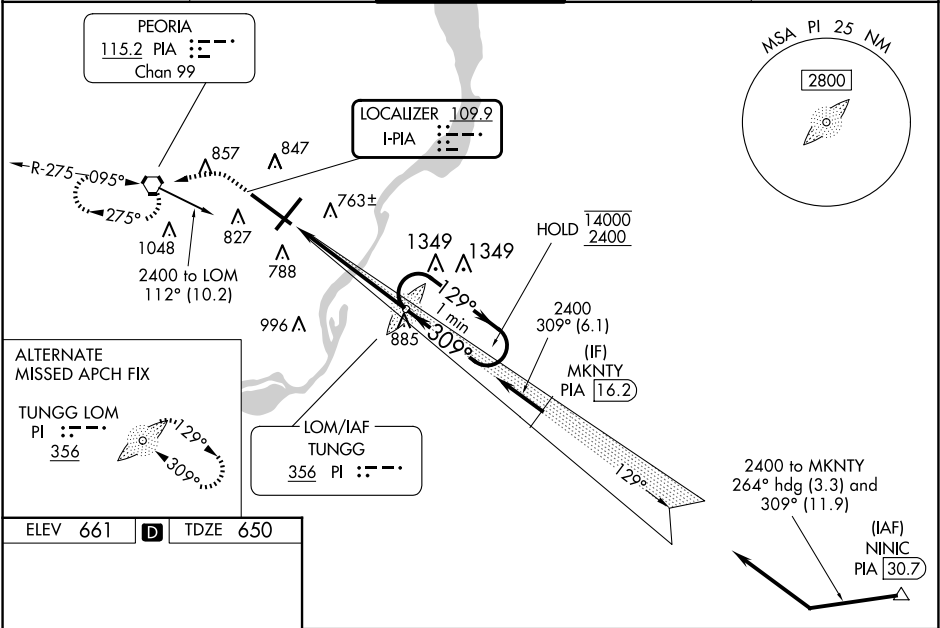
DME required.

When local altimeter setting not received, use AAA altimeter setting: increase S-ILS 31 DA to 939 feet; increase all MDAs 100 feet and S-LOC 31 visibility CAT C/D/E to 1 ¼ SM and Circling visibility Cat C ¼ SM and Cat D ½ SM. Circling Rwy 13, 31 NA at night. For inop ALS, when using AAA altimeter setting, increase S-ILS 31 all Cats visibility to RVR 4500, S-LOC 31 visibility Cats C/D/E to 1 ¾ SM. DME from PIA VORTAC. DME use requires simultaneous reception of I-PIA and PIA DME. For inop ALS, increase S-ILS 31 Cat E visibility to RVR 4000 and S-LOC 31 Cats C/D/E to 1 ¾ SM. *RVR 1800 authorized with the use of FD or AP or HUD to DA. (NA when using AAA altimeter setting).

MALSR

MISSED APPROACH: Climb to 2000 then climbing left turn to 2400 direct PIA VORTAC and hold, continue climb-in-hold to 2400.

ATIS	SAINT LOUIS APP CON	PEORIA TOWER	GND CON	CLNC DEL
126.1 282.2	125.8 269.2	124.0 353.85	121.85 348.6	124.675 317.55



ELEV 661

D

TDZE 650

1200

2400

PIA

TUNGG LOM

2350

129°

309°

14000

2400

GS 3.00°

TCH 55

5.2 NM

CATEGORY	A	B	C	D	E
S-ILS 31 *	850/24		200 (200-½)		
S-LOC 31	1120/24	470 (500-½)	1120/50	470 (500-1)	
CIRCLING	1160-1	499 (500-1)	1180-1½ 519 (600-1½)	1400-2¼ 739 (800-2¼)	1680-3 1019 (1100-3)