

APP CRS
151°

Rwy Idg
3500

TDZE
655

Apt Elev
660

RNAV (GPS) RWY 14

DANSVILLE MUNI (DSV)

RNP APCH.

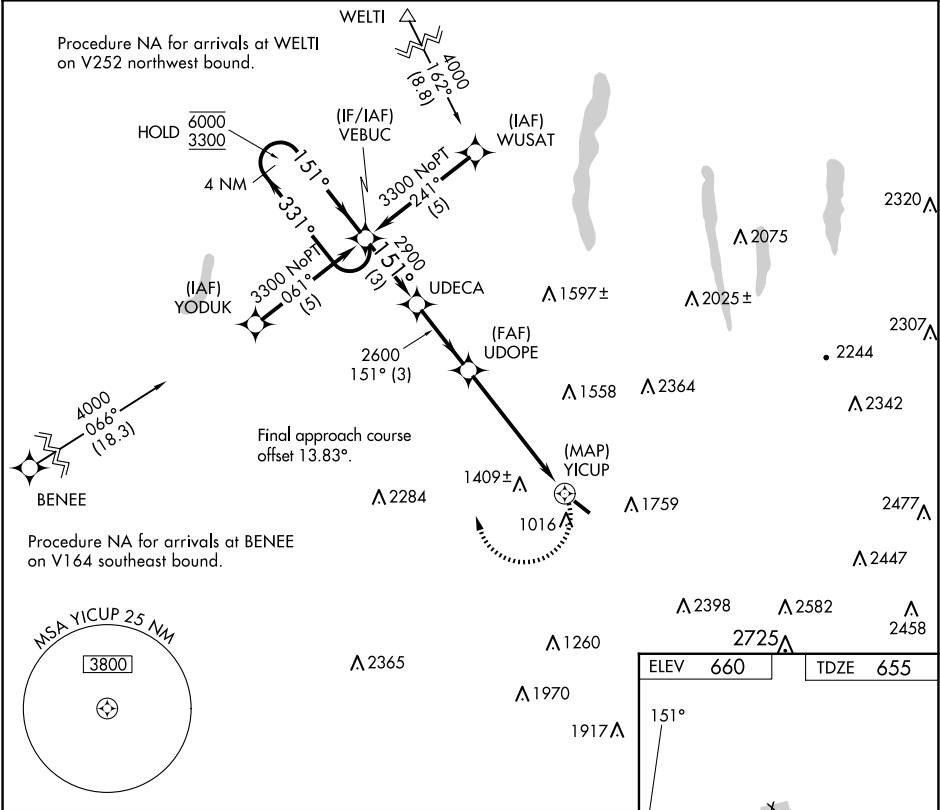
▼

▲

Procedure NA at night. Rwy 14 helicopter visibility reduction below 1 SM NA.

MISSED APPROACH: Climbing right turn to 3500 direct VEBUC and hold.

ASOS 118.325	ROCHESTER APP CON 123.7 322.3	UNICOM 123.0 (CTAF) 0
------------------------	---	---------------------------------



4 NM Holding Pattern VEBUC

VGSI and descent angles not coincident (VGSI Angle 3.00/TCH 35).

3500 VEBUC

6000 3300

331° 151°

151°

2900

2600

2.98° TCH 40

YICUP

3 NM 3 NM 5.6 NM 0.5

CATEGORY A B C D

LNVA MDA 1840-1¼ 1840-1½ 1840-3 NA

CIRCLING 1940-1¼ 2120-1½ 2220-3 NA

ELEV 660 TDZE 655

151°

0.7% UP

3500 X 100

3°

MIRL Rwy 14-32 0