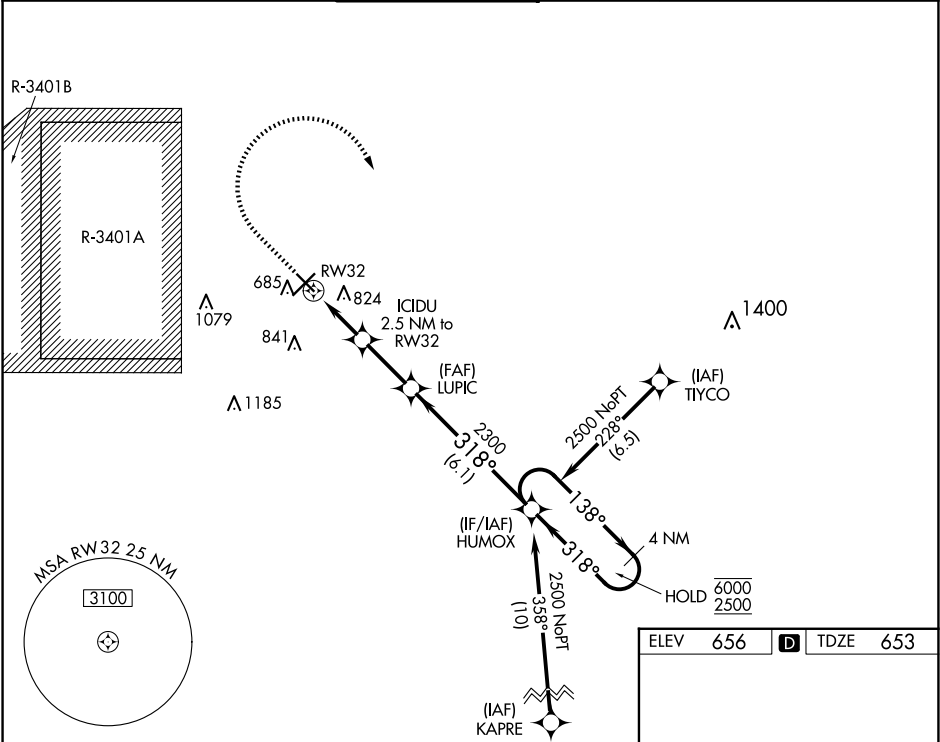


| | | |
|--|------------------------|---|
| WAAS CH 50399 W32A | APP CRS 318° | Rwy Ldg TDZE 653 Apt Elev 656 |
|--|------------------------|---|

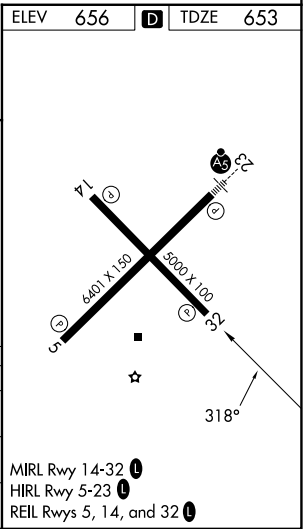
RNAV (GPS) RWY 32

COLUMBUS MUNI (BAK)

| | | | | | |
|--|--------------------------------------|------------------------------------|------------------|---|------------------|
| RNP APCH - GPS. | | | | MISSED APPROACH: Climb to 1300, then climbing right turn to 2500 direct HUMOX and hold. | |
| ▼ Rwy 32 helicopter visibility reduction below ¾ SM NA. For uncompensated Baro-VNAV systems, LNAV/VNAV NA below -16°C or above 54°C. | | | | | |
| AWOS-3 119.75 | INDIANAPOLIS APP CON 134.85 317.8 | COLUMBUS TOWER ★ 118.6 (CTAF) 0 | GND CON 121.6 | CLNC DEL 134.85 (When twr closed) | UNICOM 122.95 |



| | | | | | | |
|--|---------|-------------|----------------------|---|--|--|
| 1300 | 2500 | HUMOX | | | | |
| ↑ | ↗ | ✦ | | | | |
| <p>ICIDU 2.5 NM to RW32</p> <p>LUPIC 2300</p> <p>318°</p> <p>138° → 6000 ← 318° 2500</p> <p>HUMOX</p> <p>4 NM Holding Pattern</p> <p>GP 3.04° TCH 45</p> <p>1.2 NM</p> <p>1.3 NM</p> <p>2.5 NM</p> <p>6.1 NM</p> | | | | | | |
| CATEGORY | A | B | C | D | | |
| LPV DA | 903-1 | | 250 (300-1) | | | |
| LNAV/VNAV DA | 1056-1⅛ | | 403 (400-1⅛) | | | |
| LNAV MDA | 1080-1 | 427 (500-1) | 1080-1¼ 427 (500-1¼) | | | |



EC-2, 10 JUL 2025 to 07 AUG 2025

EC-2, 10 JUL 2025 to 07 AUG 2025