

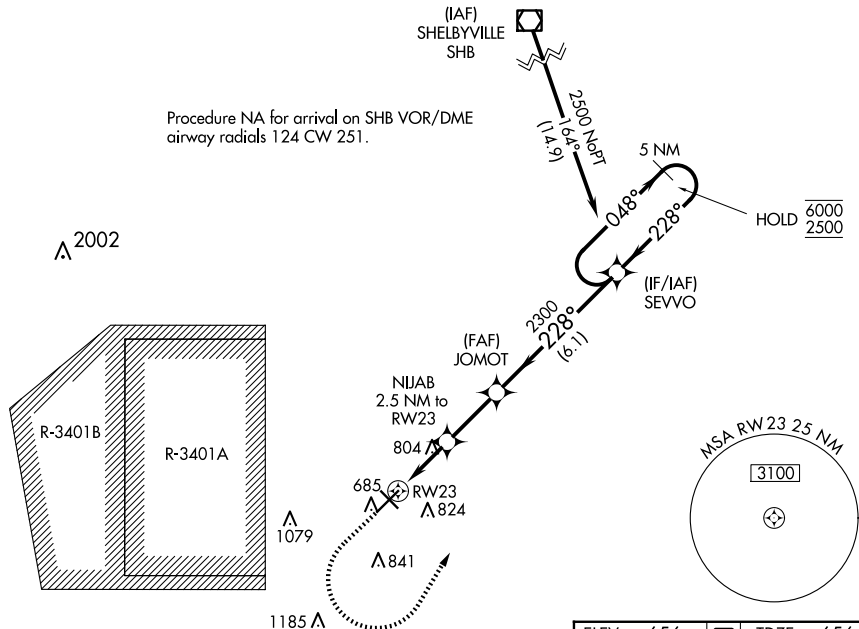


WAAS CH 90399 W23A	APP CRS 228°	Rwy Ldg 6401 TDZE 656 Apt Elev 656
--	------------------------	---

RNAV (GPS) RWY 23

COLUMBUS MUNI (BAK)

RNP APCH - GPS.			MALSR		MISSED APPROACH: Climb to 1200, then climbing left turn to 2500 direct SEVVO and hold.	
 For inop ALS, increase LNAV Cat C/D visibility to 1½ SM.						
AWOS-3 119.75	INDIANAPOLIS APP CON 134.85 317.8	COLUMBUS TOWER ★ 118.6 (CTAF) 0	GND CON 121.6	CNLC DEL 134.85 (When twr closed)	UNICOM 122.95	



CATEGORY		A	B	C	D
LPV DA		906-½ 250 (300-½)			
LNAV MDA		1060-½ 404 (500-½)		1060-¾ 404 (500-¾)	

