
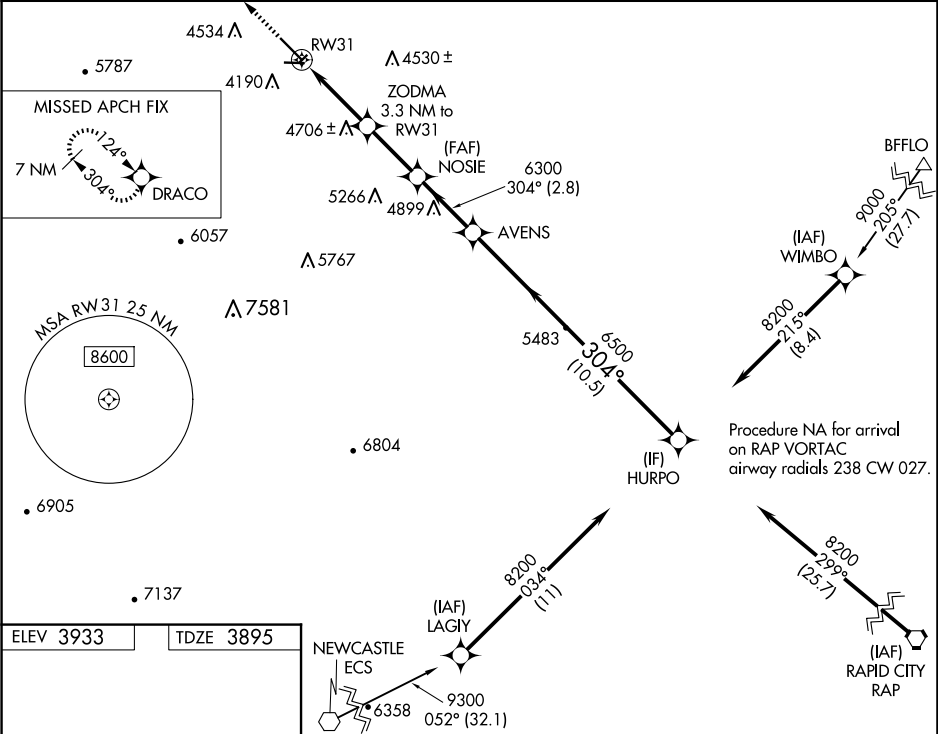


WAAS CH 77821 W31A	APP CRS 304°	Rwy Ldg TDZE Apt Elev	6401 3895 3933
--	------------------------	-----------------------------	---

RNAV (GPS) RWY 31

BLACK HILLS-CLYDE ICE FLD (SPF')

RNP APCH.		MISSED APPROACH: Climb to 7000 direct DRACO and hold.	
Circling NA to Rwy 4, 8, 22 and 26.			
-30°C			
AWOS-3 118.325	ELLSWORTH APP CON 119.5 259.1	GCO 121.725	UNICOM 122.7 (CTAF) 



ELEV 3933 TDZE 3895		NEWCASTLE ECS	
		7000 DRACO	
		VGSi and RNAV glidepath not coincident (VGSi Angle 3.00/TCH 50).	
		HURPO	
		8200	
		GP 3.77° TCH 50	
		3.3 NM 2.6 NM 2.8 NM 10.5 NM	
		CATEGORY A B C D	
		LPV DA 4281-1½ 386 (400-1½) NA	
		LNAV MDA 4860-1¼ 965 (1000-1¼) 4860-1½ 965 (1000-1½) 4860-3 965 (1000-3) NA	
		CIRCLING 4860-1¼ 927 (1000-1¼) 4860-1½ 927 (1000-1½) 5540-3 1607 (1700-3) NA	