

VOR/DME IDA 113.85 Chan 85 (Y)	APP CRS 192°	Rwy Idg TDZE Apt Elev 9002 4735 4744
--	------------------------	--

VOR RWY 21

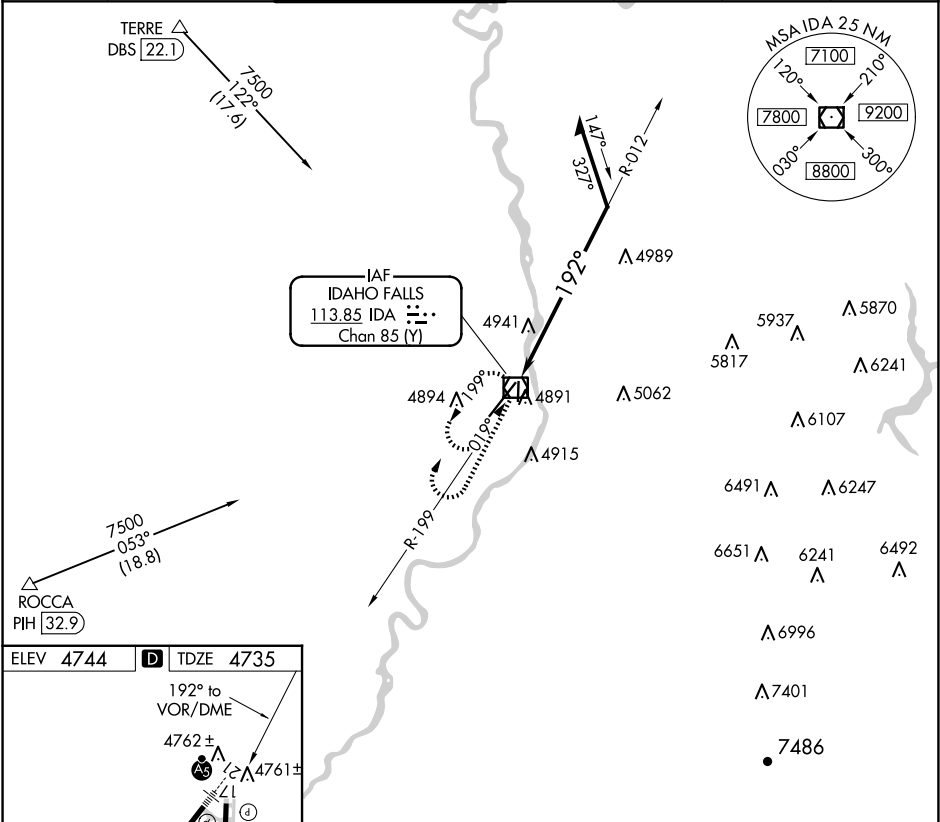
IDAHO FALLS RGNL (IDA)

For inop ALS increase S-21 Cats C/D visibility to 1½ SM.

MALSRL

MISSED APPROACH: Climb to 7000 then right turn direct IDA VOR/DME and hold.

ATIS 135.325	SALT LAKE CENTER 128.35 239.25	IDAHO FALLS TOWER ★ 118.5 (CTAF) 257.8	GND CON 121.7	CLNC DEL 121.7	GCO 121.725	UNICOM 122.95
------------------------	--	---	-------------------------	--------------------------	-----------------------	-------------------------



ELEV 4744 **D** TDZE 4735

192° to VOR/DME

4762±

4761±

4741

4887

4833

3964 X 75

9002 X 150

REIL Rwy 3 **1**

HIRL Rwy 3-21 **1**

MIRL Rwy 17-35

7000

IDA

IDA VOR/DME

Remain within 10 NM

012°

192°

6900

2 NM

CATEGORY	A	B	C	D
S-21	5400/24 665 (700-½)		5400-1½ 665 (700-1½)	
C CIRCLING	5400-1 656 (700-1)		5400-1¾ 666 (700-1¾)	5420-2¼ 676 (700-2¼)