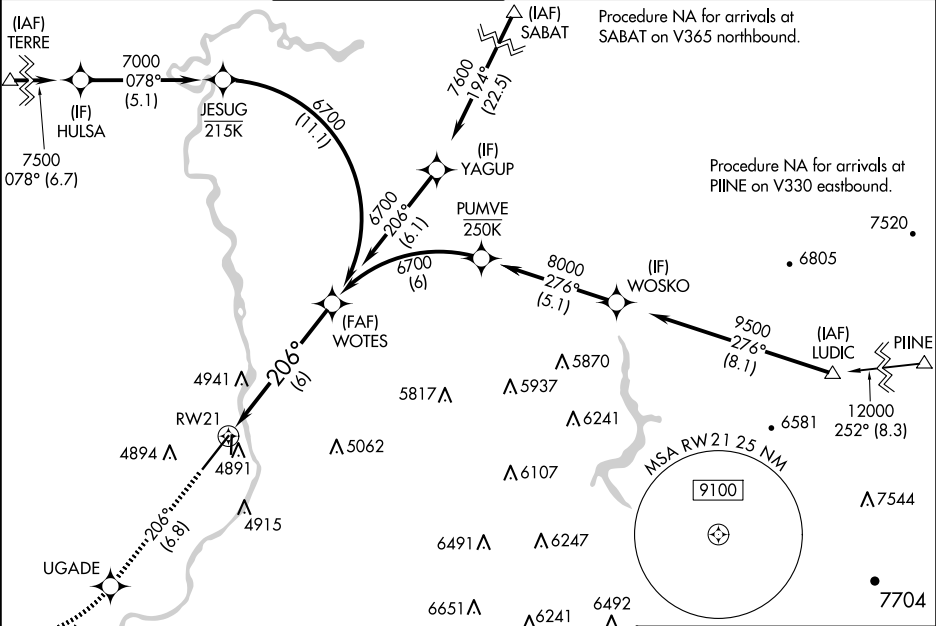


APP CRS	Rwy Idg	9002
206°	TDZE	4735
	Apt Elev	4744

RNAV (RNP) Z RWY 21

IDAHO FALLS RGNL (IDA)

RNP AR APCH-GPS.			MALSR	MISSED APPROACH: Climb to 7500 on track 206° to UGADE, right turn to STOPS, and on track 259° to ROCCA and hold.		
For uncompensated Baro-VNAV systems, procedure NA below -27°C or above 54°C. For inop ALS, increase RNP 0.11 visibility all Cats to RVR 4500.						
ATIS	SALT LAKE CENTER	IDAHO FALLS TOWER ★	GND CON	CLNC DEL	GCO	UNICOM
135.325	128.35 239.25	118.5 (CTAF) 0 257.8	121.7	121.7	121.725	122.95



7500

UGADE

tr 206°

STOPS

tr 259°

ROCCA

△

WOTES

6700

See planview for multiple IF locations.

6 NM

GP 3.00°

TCH 49

CATEGORY	A	B	C	D
RNP 0.11 DA	5011/24 276 (300-½)			
RNP 0.30 DA	5120/35 385 (400-¾)			

AUTHORIZATION REQUIRED

ELEV 4744

TDZE 4735

206° to RWY 21

4762±

4761±

4741

4887

3964 x 75

TWR 4833

9002 x 150

REIL Rwy 3 0

HIRL Rwy 3-21 0

MIRL Rwy 17-35