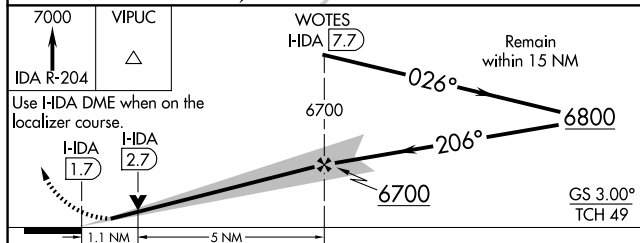
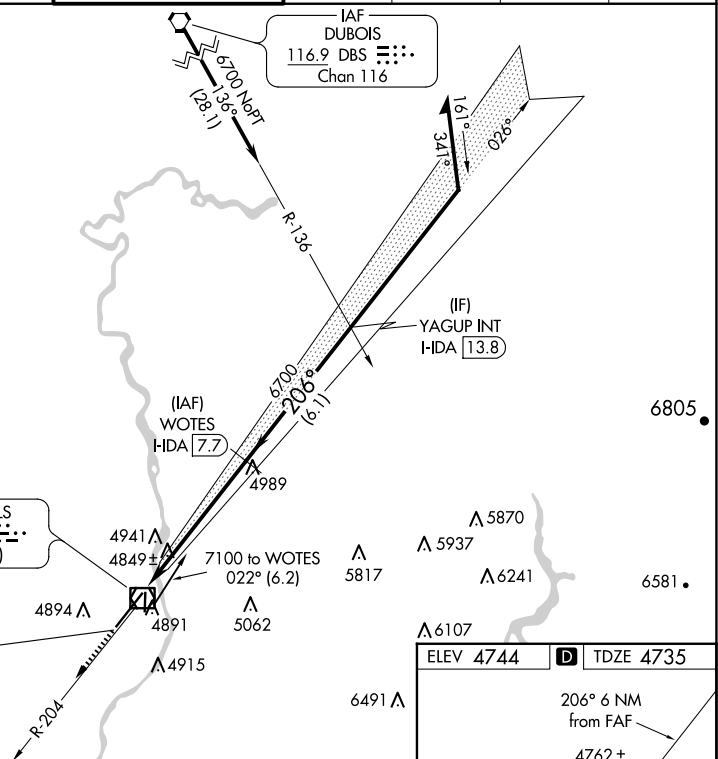
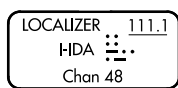
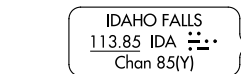
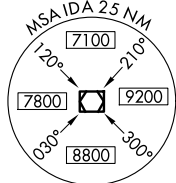


ILS or LOC RWY 21
IDAHO FALLS RGNL (IDA)

MISSED APPROACH: Climb to 7000 on IDA VOR/DME R-204 to VIPUC/12.8 DME and hold.



ELEV 4744

D

TDZE 4735

206° 6' NM from FAF

4762 ±

A5

4761 ±

4741

35

4887

3964 x 75

4833

P

9002 x 150

REIL Rwy 3

HIRL Rwy 3-21

MIRL Rwy 17-35

FAF to MAP 6 NM

	Knots	60	90	120	150	180
Min:Sec	6:00	4:00	3:00	2:24	2:00	

NW-1, 10 JUL 2025 to 07 AUG 2025