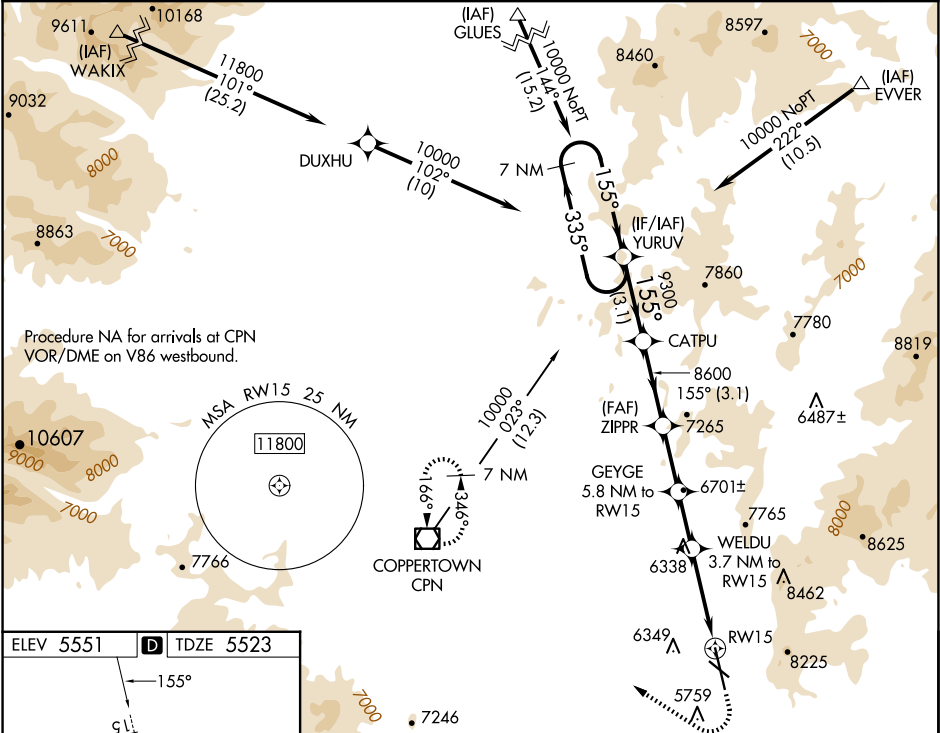


WAAS CH 56341 W15A	APP CRS 155°	Rwy Ldg TDZE 5523 Apt Elev 5551
--	------------------------	---

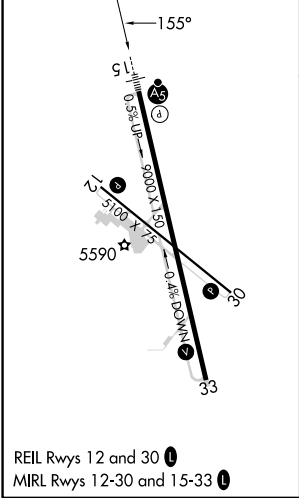
RNAV (GPS) RWY 15
BERT MOONEY (BTM)

<p>A Circling NA northeast of Rwy 15-33. DME/DME RNP-0.3 NA. For Inop ALS, increase LPV all Cats visibility to 2½ SM, increase LPV# Cat C/D visibility to ¾ SM. Inop table does not apply to LNAV Cats C/D.</p>	<p>MALSR</p> <p>A5</p>	<p>MISSED APPROACH: (Do not exceed 190K until 7100) Climb to 7100 then climbing right turn to 11000 direct CPN VOR/DME and hold, continue climb-in-hold to 11000. #Missed approach requires minimum climb of 365 feet per NM to 8700.</p>
--	--------------------------------------	--

ASOS 135.175	SALT LAKE CENTER 132.4 338.3	UNICOM 123.0(CTAF) 0
-------------------------------	---	---------------------------------------



ELEV 5551	D	TDZE 5523
-----------	----------	-----------



<div>7 NM Holding Pattern</div> <div>YURUV</div> <div>CATPU</div> <div>ZIPPR</div> <div>GEYGE 5.8 NM to RW15</div> <div>WELDU 3.7 NM to RW15</div> <div>CPN</div>				<div>7100</div> <div>11000</div> <div></div>
<div>10000 ← 335°</div> <div>155° →</div> <div>155°</div> <div>9300</div> <div>8600</div> <div>*7700</div> <div>*6920</div> <div>RW15</div> <div>*LNAV only.</div>				
<div>GP 3.50°</div> <div>TCH 55°</div>				
<div>← 3.1 NM</div> <div>← 3.1 NM</div> <div>← 2.4 NM</div> <div>← 2.1 NM</div> <div>← 3.7 NM</div>				
CATEGORY	A	B	C	D
LPV DA	6281-1⅞ 758 (800-1⅞)			
LPV DA#	5825-1½ 302 (300-1½)			
LNAV MDA	6780-¾ 1257 (1300-¾)	6780-1 1257 (1300-1)	6780-3 1257 (1300-3)	
C CIRCLING	6780-1¼ 1229 (1300-1¼)	1229 (1300-1¼)	7060-3 1509 (1600-3)	7120-3 1569 (1600-3)

NW-1, 10 JUL 2025 to 07 AUG 2025

NW-1, 10 JUL 2025 to 07 AUG 2025