

WAAS
CH **72818**
W35A

APP CRS
354°

Rwy Ldg
TDZE
Apt Elev
5593
1067
1073

RNAV (GPS) RWY 35

SHAWNEE RGNL (SNL)

▼

▲

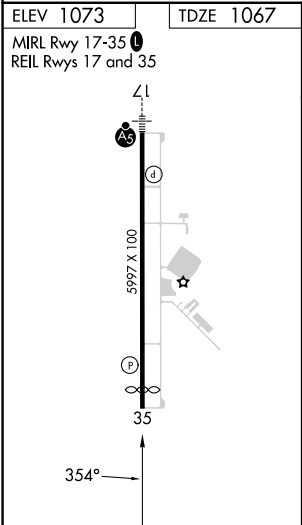
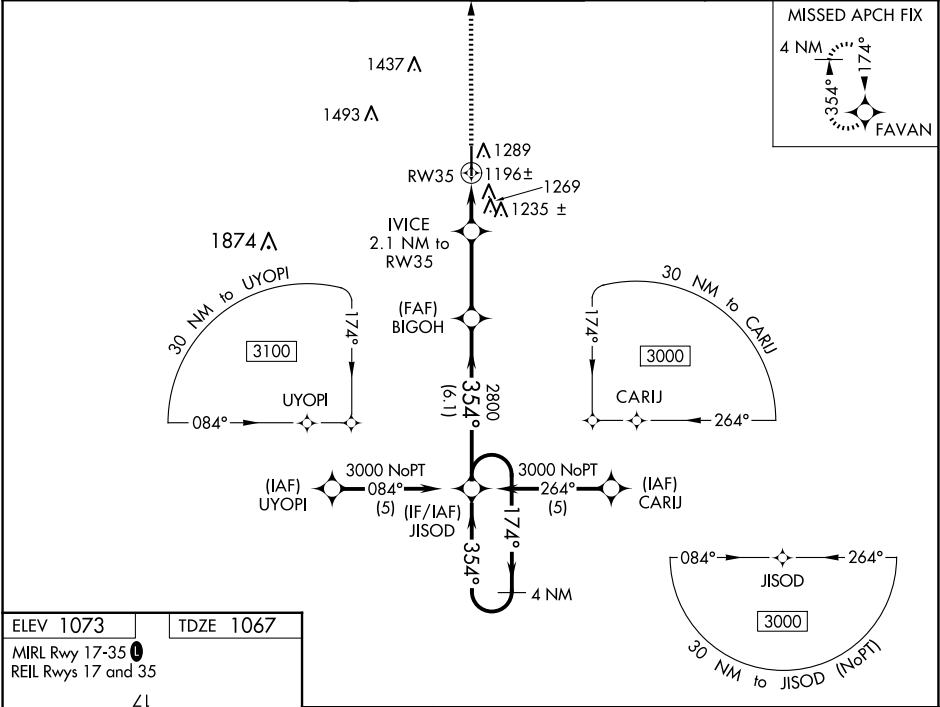
Baro-VNAV NA when using Seminole altimeter setting. For uncompensated Baro-VNAV systems, LNAV/VNAV NA below -17°C (2°F) or above 54°C (130°F). DME/DME RNP-0.3 NA. When local altimeter setting not received, use Seminole altimeter setting: increase LPV DA to 1357 feet; increase LNAV/VNAV DA to 1605 feet and visibility ¼ SM; increase all MDAs 40 feet and visibility Cat C ¼ SM.

MISSED APPROACH:
Climb to 3000 direct
FAVAN and hold.

AWOS-3PT
118.275

OKE CITY APP CON
120.45 288.325

UNICOM
122.7 (CTAF)



3000 FAVAN		VGSi and RNAV glidepath not coincident (VGSi Angle 3.00/TCH 42).	
*LNAV only.		4 NM Holding Pattern	
IVICE 2.1 NM to RW35		BIGOH 2800	
RW35		354° 174° 3000	
1780*		2800	
2.1		3.1 NM 6.1 NM	
CATEGORY	A	B	C
LPV DA	1317-1	250 (300-1)	NA
LNAV/VNAV DA	1565-1¾	498 (500-1¾)	NA
LNAV MDA	1520-1	453 (500-1)	1520-1¼ 453 (500-1¼)
CIRCLING	1600-1	527 (600-1)	1640-1½ 567 (600-1½)

SC-1, 10 JUL 2025 to 07 AUG 2025

SC-1, 10 JUL 2025 to 07 AUG 2025