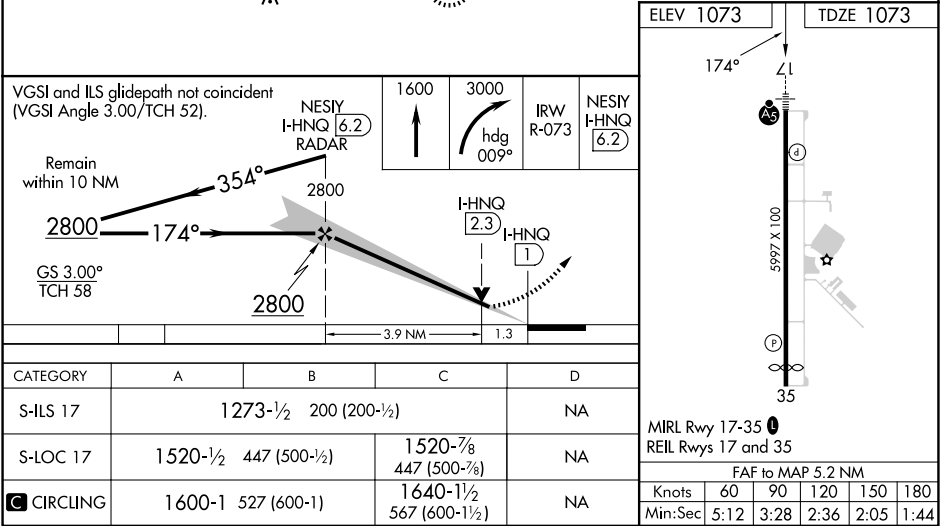
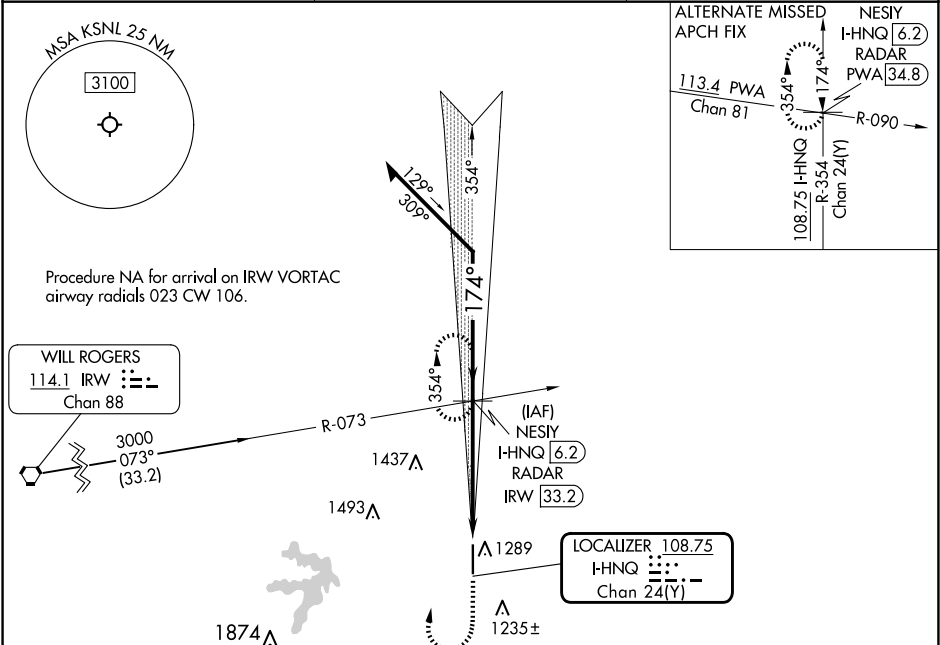


LOC/DME I-HNQ 108.75 Chan 24(Y)	APP CRS 174°	Rwy Ldg TDZE 1073 Apt Elev 1073
---	------------------------	---

ILS or LOC RWY 17
SHAWNEE RGNL (SNL)

DME or RADAR required.	MALSR 	MISSED APPROACH: Climb to 1600 then climbing right turn to 3000 on heading 009° and IRW R-073 to NESIY/I-HNQ 6.2 DME/RADAR and hold, continue climb-in-hold to 3000.
------------------------	-----------	--

AWOS-3PT 118.275	OKE CITY APP CON 120.45 288.325	UNICOM 122.7 (CTAF)
----------------------------	---	-------------------------------



SC-1, 10 JUL 2025 to 07 AUG 2025

SC-1, 10 JUL 2025 to 07 AUG 2025