

WAAS CH 62914 W04A	APP CRS 044°	Rwy Ldg 10701 TDZE 1057 Apt Elev 1077
--	------------------------	--

RNAV (GPS) RWY 4L

WILMINGTON AIR PARK (ILN)

RNP APCH - GPS.

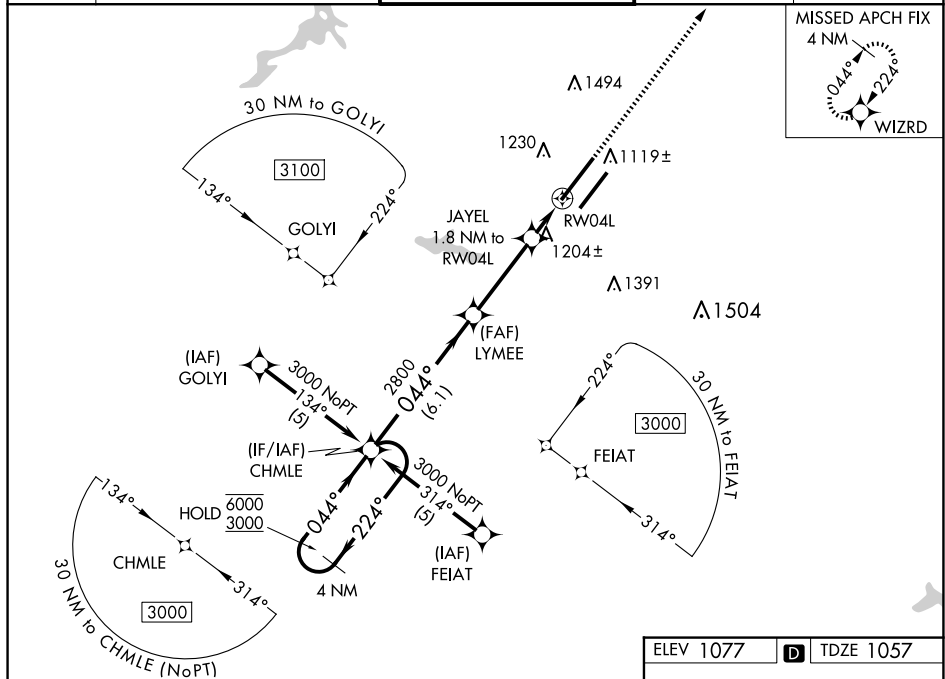
T For uncompensated Baro-VNAV systems, LNAV/VNAV NA below -17°C or above 54°C.
A For inop ALS, increase LNAV Cats A/B visibility to RVR 5500 and LNAV Cats C/D visibility to RVR 6000. *1800 RVR authorized with use of FD or AP or HUD to DA.

MALSR



MISSED APPROACH:
Climb to 3000 direct
WIZRD and hold.

D-ATIS	COLUMBUS APP CON	WILMINGTON TOWER	GND CON	CLNC DEL
124,925	118.85 269,275	119,475	121.6	128.85



4 NM Holding Pattern

CHMLE

VGSI and RNAV glidepath not coincident (VGSI Angle 3.00/TCH 62)

3000

WZRD

6000 ← 224°

3000 → 044°

044°

LYMEE

JAYEL 1.8 NM to RW04L


1.1 NM to RW04L

RW04L

2800

1680

GP 3.00° TCH 51

CATEGORY	A	B	C	D
LPV DA *	1257/24 200 (200-½)			
LNAV/ VNAV DA	1505/45 448 (500-¾)			
LNAV MDA	1460/24	403 (400-½)	1460/40	403 (400-¾)
 CIRCLING	1560-1	483 (500-1)	1860-2¼ 783 (800-2¼)	1860-2½ 783 (800-2½)

