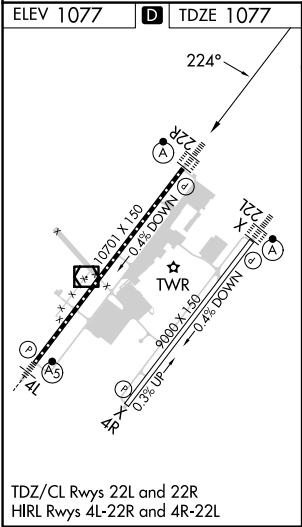
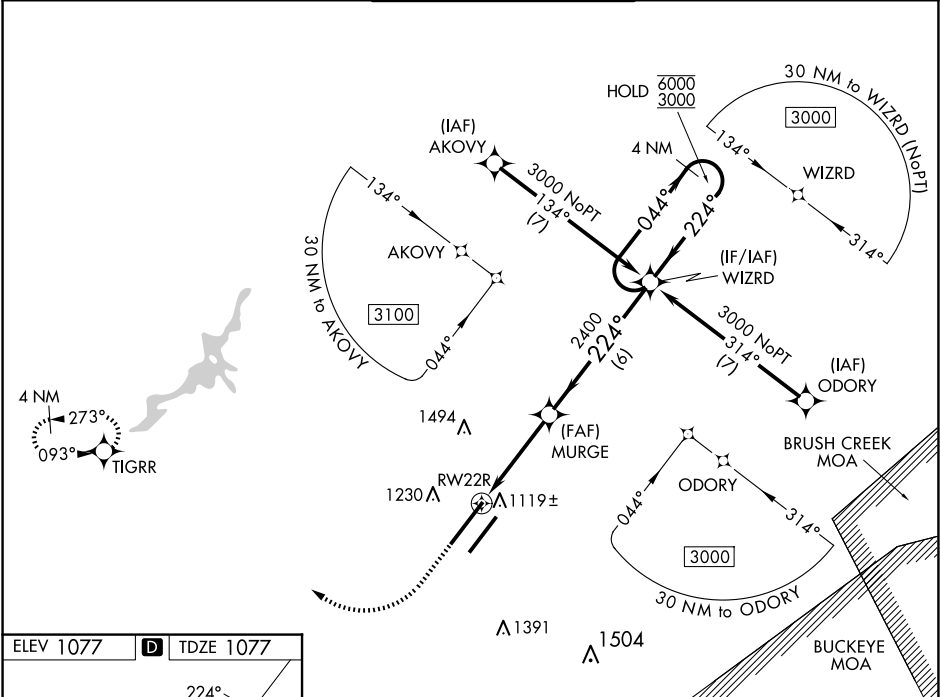


WAAS CH 40214 W22A	APP CRS 224°	Rwy Idg 10701 TDZE 1077 Apt Elev 1077
--	------------------------	--

RNAV (GPS) RWY 22R

WILMINGTON AIR PARK (ILN)

RNP APCH - GPS. For uncompensated Baro-VNAV systems, LNAV/VNAV NA below -19°C or above 54°C. For inop ALS, increase LNAV/VNAV all Cats visibility to RVR 4500.			ALSF-2 	MISSED APPROACH: Climb to 1500 then right turn 3000 direct TIGRR and hold.	
D-ATIS 124.925	COLUMBUS APP CON 118.85 269.275	WILMINGTON TOWER 119.475	GND CON 121.6	CLNC DEL 128.85	



1500		3000		TIGRR		VGSI and RNAV glidepath not coincident (VGSI Angle 3.00/TCH 71).			
						4 NM Holding Pattern			
		RW22R		1.2 NM to RW22R		MURGE 2400			
				2.8 NM		224°			
		1.2 NM		6 NM		WIZRD			
						044° → 6000 ← 224° 3000			
						GP 3.00° TCH 55			
CATEGORY		A		B		C		D	
LPV DA				1277/18		200 (200-½)			
LNAV/ VNAV DA				1393/24		316 (400-½)			
LNAV MDA		1520/24		443 (500-½)		1520/45		443 (500-¾)	
CIRCLING		1560-1		483 (500-1)		1860-2¼ 783 (800-2¼)		1860-2½ 783 (800-2½)	