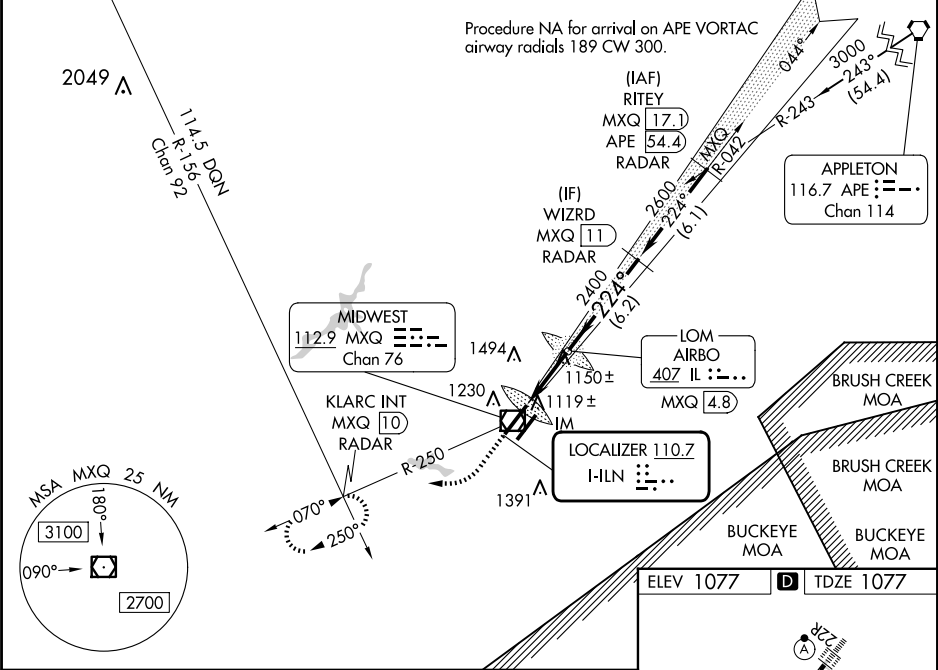


LOC I-ILN 110.7	APP CRS 224°	Rwy Idg TDZE Apt Elev	10701 1077 1077
---------------------------	------------------------	-----------------------------	--

ILS RWY 22R (CAT II & III)

WILMINGTON AIR PARK (ILN)

DME or RADAR required for procedure entry.			ALSIF-2 	MISSED APPROACH: Climb to 1600 then climbing right turn to 3500 on MXQ VOR/DME R-250 to KLARC INT/MXQ 10 DME/RADAR and hold, continue climb-in-hold to 3500.
 Simultaneous approach authorized. DME from MXQ VOR/DME. DME use requires simultaneous reception of I-ILN and MXQ DME.	D-ATIS 124.925	COLUMBUS APP CON 118.85 269.275		
		WILMINGTON TOWER 119.475	GND CON 121.6	CLNC DEL 128.85



1600	3500	VGSI and ILS glidepath not coincident (VGSI Angle 3.00/TCH 71).	
		KLARC INT	WIZRD MXQ 11 RADAR
IM 1180	AIRBO LOM MXQ 4.8	2327	2600
2400	224°	2400	GS 3.00° TCH 55
1125'	3.8 NM	6.2 NM	
CATEGORY	A	B	C
S-ILS 22R	CAT II	RA 106/12	100 DA 1177
S-ILS 22R	CAT III	RVR 06	
CATEGORY II & III ILS - SPECIAL AIRCREW & AIRCRAFT CERTIFICATION REQUIRED			

