

SEATTLE APP CON
123.9 338.2
BFI ATIS
127.75
RRNT ATIS
126.95
SEA D-ATIS
118.0

SKYKO ONE ARRIVAL

(SKYKO.SKYKO1) 19MAY22

ARRIVAL ROUTE DESCRIPTION

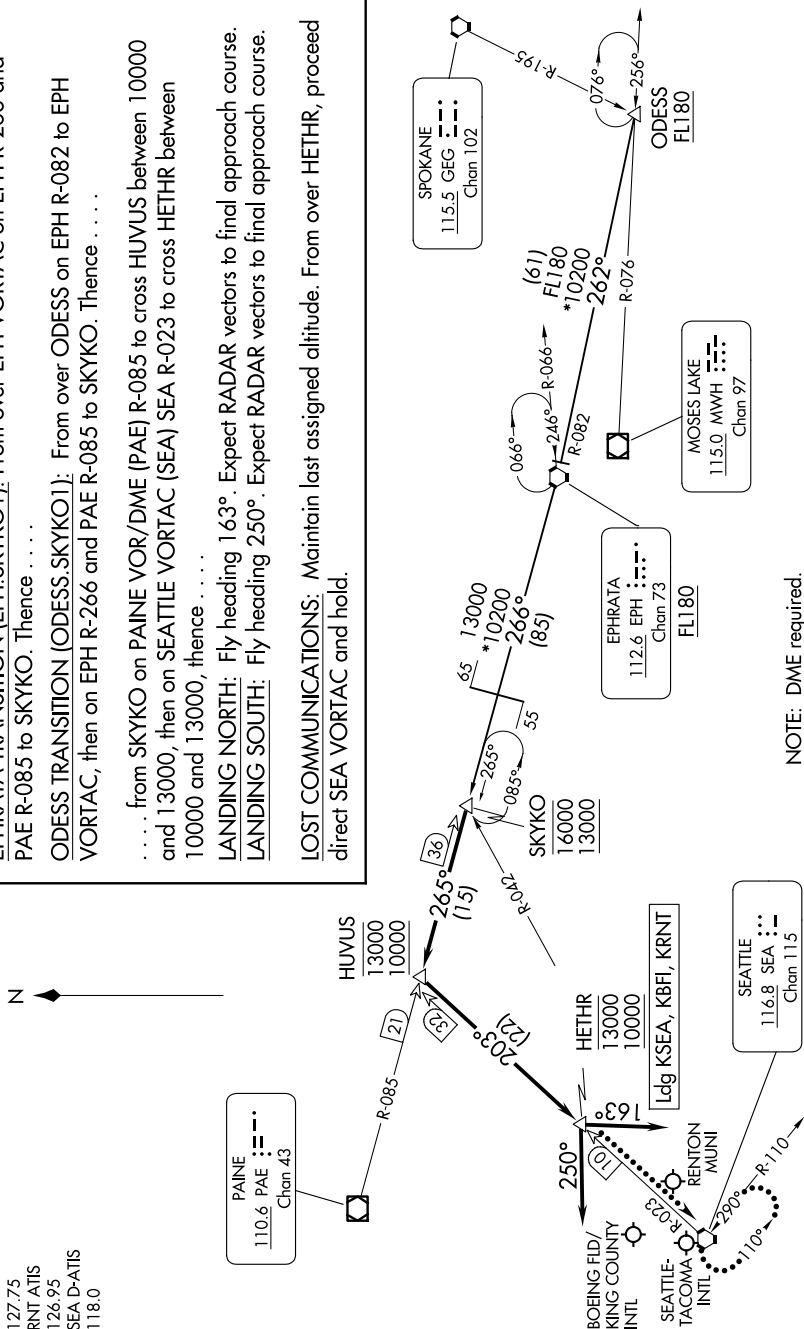
PAE R-085 to SKYKO. Thence
ODESS TRANSITION (ODESS.SKYKO1): From over ODESS on EPH R-082 to EPH VORTAC, then on EPH R-266 and PAE R-085 to SKYKO. Thence

... from SKYKO on PAINE VOR/DME (PAE) R-085 to cross HUVUS between 10000 and 13000, then on SEATTLE VORTAC (SEA) SEA R-023 to cross HETHR between 10000 and 13000, thence ...

LANDING NORTH: Fly heading 163°. Expect RADAR vectors to final approach course.

LANDING SOUTH: Fly heading 250°. Expect RADAR vectors to final approach course.

LOST COMMUNICATIONS: Maintain last assigned altitude. From over HETHR, proceed direct SEA VORTAC and hold.



NOTE: DME required.

NOTE: RADAR required.

NOTE: Turboprop and prop aircraft only.

NOTE: Chart not to scale.

SEATTLE, WASHINGTON

NW-1, 10 JUL 2025 to 07 AUG 2025